

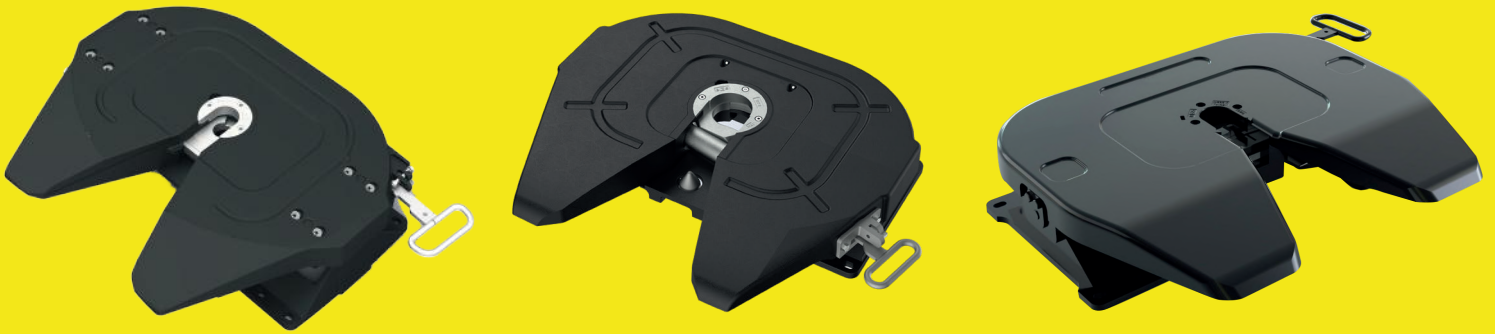
TRUCK **SPARE PARTS**

Gesuchte Europäische Qualität

SPARE PARTS

sought-after
quality

FIFTH WHEEL



KLÖTZE
TECHNIC

www.klotzetechnik.de

Klötze Technic ist ein in Deutschland ansässiger Hersteller und Lieferant von LKW-, Anhänger- und Bus-Ersatzteilen.



KLÖTZE
TECHNIC

Gesuchte Europäische
Qualität

Klötze Technic is a Germany-based company specializing in truck, trailer, and bus spare parts. Together with our sales office in Turkey, we provide our customers with original spare parts of guaranteed quality. Our products are manufactured with superior German engineering.

Our main groups consist of Engine, Cooling System, Fuel System, Exhaust System, Clutch & Pedal, Gearbox, Propeller Shaft, Axles, Brake System, Hubs & Wheels, Suspension, Steering, Electrical System, Cabin, and Body.

At Klötze Technic, we strive to provide our customers with the highest quality products, competitive prices, and superior customer service.

Our Mission:

At Klötze Technic, we work to provide our customers with the highest quality and reliable spare parts for trucks, trailers, and buses.

Our high-quality products are manufactured with superior German engineering.

Our mission is to meet our customers' needs and provide them with the best customer service possible.

Our Vision:

At Klötze Technic, we aim to become a world-leading company in the field of truck, trailer, and bus spare parts.

Our vision is to provide our customers with the highest quality products, competitive prices, and superior customer service. In doing so, we aim to meet our customers' needs and ensure their satisfaction.

Our Quality Policy:

At Klötze Technic, quality and customer satisfaction are always our top priorities. Our products are manufactured with superior German engineering and are provided to our customers as original spare parts of guaranteed quality. Our quality policy is to provide our customers with the best quality products and meet their needs in the best way possible.

Customer satisfaction is always important to us.

TRUCK SPARE PARTS



Gesuchte Europäische
Qualität

KLÖTZE
TECHNIC

www.klotzetechnik.de

TRUCK SPARE PARTS



KLÖTZE
TECHNIC







KLÖTZE
TECHNIC

www.klotzetechnik.de





KT No. Replaces Ref. No: Description Model / Details

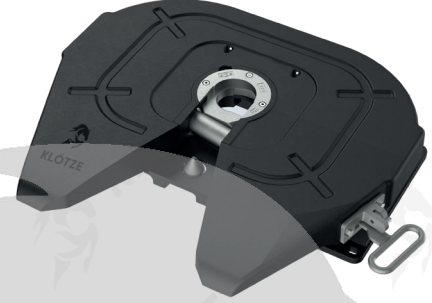
BEŞİNCİ TEKER 2"
FIFTH WHEEL 2"



KLÖTZE TECHNIC NO. ▶ **KT43440**

OEM. REF. NO. JSK 37C185

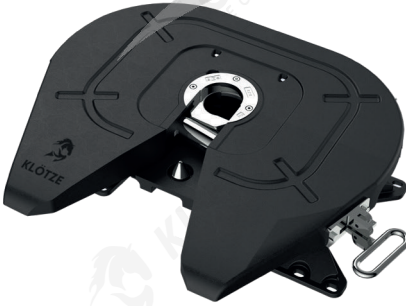
BEŞİNCİ TEKER 3.5"
FIFTH WHEEL 3.5"



KLÖTZE TECHNIC NO. ▶ **KT43577**

OEM. REF. NO. JSK 38C1/C2

BEŞİNCİ TEKER 3.5" MAFSALLI
FIFTH WHEEL 3.5" ARTICULATION



KLÖTZE TECHNIC NO. ▶ **KT43629**

OEM. REF. NO. JSK 38G1/G2

BEŞİNCİ TEKER 2" SAC
FIFTH WHEEL 2" (STEEL)



KLÖTZE TECHNIC NO. ▶ **KT43559**

OEM. REF. NO. JSK 36DV

BEŞİNCİ TEKER 2" KÜÇÜK
FIFTH WHEEL 2" SMALL



KLÖTZE TECHNIC NO. ▶ **KT43814**

OEM. REF. NO. JSK 26

BEŞİNCİ TEKER SABİTLEME SEHPASI H30-H90
FIFTH WHEEL MOUNTING PLATES H30-H90



KLÖTZE TECHNIC NO. ▶ **KT43442**

OEM. REF. NO. MP 2102



KT No. Replaces Ref. No: Description Model / Details

BEŞİNCİ TEKER KİLİT KANCA 2"
FIFTH WHEEL LOCK JAW 2"



KLÖTZE TECHNIC NO. ▶ **KT43333**

OEM. REF. NO. SK 3221-52

BEŞİNCİ TEKER AŞINMA AYI 2" (3 DELİK)
FIFTH WHEEL WEARING RING 2" (3 HOLES)



KLÖTZE TECHNIC NO. ▶ **KT43334**

OEM. REF. NO. SK 2121-51

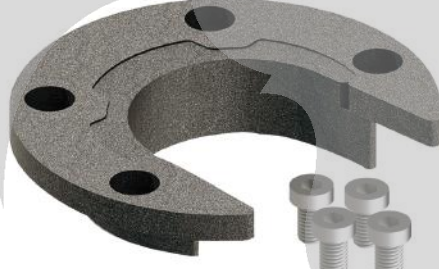
BEŞİNCİ TEKER AŞINMA AYI (4 DELİK)
FIFTH WHEEL WEARING RING (4 HOLES)



KLÖTZE TECHNIC NO. ▶ **KT43335**

OEM. REF. NO.

BEŞİNCİ TEKER AŞINMA AYI 2" (4 DELİK - PLASTİK)
FIFTH WHEEL WEARING RING 2" (4 HOLES-PLASTIC)



KLÖTZE TECHNIC NO. ▶ **KT43336**

OEM. REF. NO. SK 3105-94

BEŞİNCİ TEKER KİLİTLEME KAMASI 2"
FIFTH WHEEL LOCKING BOLT 2"



KLÖTZE TECHNIC NO. ▶ **KT43337**

OEM. REF. NO. SK 3205-06

BEŞİNCİ TEKER KİLİTLEME KAMASI 2"
FIFTH WHEEL LOCKING BOLT 2"



KLÖTZE TECHNIC NO. ▶ **KT43338**

OEM. REF. NO.



KT No. Replaces Ref. No: Description Model / Details

BEŞİNCİ TEKER KİLİT KANCA 2"
FIFTH WHEEL LOCK JAW 2"



KLÖTZE TECHNIC NO. ▶ KT43339

OEM. REF. NO. 662 129 134

BEŞİNCİ TEKER KİLİT KANCA 2"
FIFTH WHEEL LOCK JAW 2"



KLÖTZE TECHNIC NO. ▶ KT43340

OEM. REF. NO. 662 131 107

BEŞİNCİ TEKER AŞINMA AYI 2"
FIFTH WHEEL WEARING RING 2"



KLÖTZE TECHNIC NO. ▶ KT43341

OEM. REF. NO. 662 101 566

BEŞİNCİ TEKER AŞINMA AYI 2"
FIFTH WHEEL WEARING RING 2"



KLÖTZE TECHNIC NO. ▶ KT43342

OEM. REF. NO. 662 101 534

BEŞİNCİ TEKER AŞINMA AYI 2"
FIFTH WHEEL WEARING RING 2"



KLÖTZE TECHNIC NO. ▶ KT43343

OEM. REF. NO. 662 101 565

BEŞİNCİ TEKER KİLİTLEME KAMASI 2"
FIFTH WHEEL LOCKING BOLT 2"



KLÖTZE TECHNIC NO. ▶ KT43344

OEM. REF. NO. 662 129 381



KT No. Replaces Ref. No: Description Model / Details

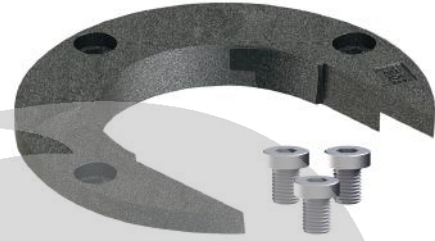
BEŞİNCİ TEKER KİLİT KANCA 3.5"
FIFTH WHEEL LOCK JAW 3.5"



KLÖTZE TECHNIC NO. ▶ **KT43345**

OEM. REF. NO. SK 2405-14

BEŞİNCİ TEKER AŞINMA AYI 3.5"
FIFTH WHEEL WEARING RING 3.5"



KLÖTZE TECHNIC NO. ▶ **KT43346**

OEM. REF. NO. SK 2421-56

BEŞİNCİ TEKER KİLİT KANCA 3.5"-2"
FIFTH WHEEL LOCK JAW 3.5"-2"



KLÖTZE TECHNIC NO. ▶ **KT43347**

OEM. REF. NO. SK 2405-13

BEŞİNCİ TEKER AŞINMA AYI 3.5"-2"
FIFTH WHEEL WEARING RING 3.5"-2"



KLÖTZE TECHNIC NO. ▶ **KT43348**

OEM. REF. NO. SK 2421-57

BEŞİNCİ TEKER KİLİTLEME KAMASI 3.5"
FIFTH WHEEL LOCKING BOLT 3.5"



KLÖTZE TECHNIC NO. ▶ **KT43349**

OEM. REF. NO. SK 2405-01

BEŞİNCİ TEKER YAĞLAMA TAKIMI
FIFTH WHEEL LUBRICATION KIT



KLÖTZE TECHNIC NO. ▶ **KT43351**

OEM. REF. NO. SK 3108-02



KT No. Replaces Ref. No: Description Model / Details

BEŞİNCİ TEKER KİLİT KANCA 2"
FIFTH WHEEL LOCK JAW 2"



KLÖTZE TECHNIC NO. ▶ KT43350

OEM. REF. NO. SK 2121-52

BEŞİNCİ TEKER KİLİT KANCA 2"
FIFTH WHEEL LOCK JAW 2"



KLÖTZE TECHNIC NO. ▶ KT43352

OEM. REF. NO.

BEŞİNCİ TEKER AŞINMA AYI (2 DELİK)
FIFTH WHEEL WEARING RING 2" (2 HOLE)



KLÖTZE TECHNIC NO. ▶ KT43353

OEM. REF. NO.

BEŞİNCİ TEKER KİLİT KANCA
FIFTH WHEEL LOCK JAW



KLÖTZE TECHNIC NO. ▶ KT43354

OEM. REF. NO.

BEŞİNCİ TEKER KİLİT KANCA 2" SOL
FIFTH WHEEL LOCK JAW 2" LEFT



KLÖTZE TECHNIC NO. ▶ KT43355

OEM. REF. NO. SK 1489-L

BEŞİNCİ TEKER KİLİTLEME KAMASI 2"
FIFTH WHEEL LOCKING BOLT 2"



KLÖTZE TECHNIC NO. ▶ KT43356

OEM. REF. NO. SK 2905-06



KT No. Replaces Ref. No: Description Model / Details

BEŞİNCİ TEKER KİLİT KANCA 2"
FIFTH WHEEL LOCK JAW 2"



KLÖTZE TECHNIC NO. ▶ KT43357

OEM. REF. NO. 662 126 403

BEŞİNCİ TEKER KİLİT KANCA 2"
FIFTH WHEEL LOCK JAW 2"



KLÖTZE TECHNIC NO. ▶ KT43358

OEM. REF. NO. 662 130 104

BEŞİNCİ TEKER KİLİT KANCA 2"
FIFTH WHEEL LOCK JAW 2"



KLÖTZE TECHNIC NO. ▶ KT43359

OEM. REF. NO. 662 126 401

BEŞİNCİ TEKER AŞINMA AYI 2"
FIFTH WHEEL WEARING RING 2"



KLÖTZE TECHNIC NO. ▶ KT43360

OEM. REF. NO. 662 101 338

BEŞİNCİ TEKER AŞINMA AYI 2"
FIFTH WHEEL WEARING RING 2"



KLÖTZE TECHNIC NO. ▶ KT43361

OEM. REF. NO. 662 101 562

BEŞİNCİ TEKER AŞINMA AYI 2"
FIFTH WHEEL WEARING RING 2"



KLÖTZE TECHNIC NO. ▶ KT43362

OEM. REF. NO. 662 101 494





KT No. Replaces Ref. No: Description Model / Details

BEŞİNCİ TEKER KİLİT KANCA 3.5"
FIFTH WHEEL LOCK JAW 3.5"



KLÖTZE TECHNIC NO. ▶ **KT43363**

OEM. REF. NO. 662 111 247

BEŞİNCİ TEKER AŞINMA AYI 3.5"
FIFTH WHEEL WEARING RING 3.5"



KLÖTZE TECHNIC NO. ▶ **KT43364**

OEM. REF. NO. 662 101 711

BEŞİNCİ TEKER AŞINMA AYI 3.5"
FIFTH WHEEL WEARING RING 3.5"



KLÖTZE TECHNIC NO. ▶ **KT43365**

OEM. REF. NO. 662 101 564

BEŞİNCİ TEKER KİLİT KANCA 3.5"-2"
FIFTH WHEEL LOCK JAW 3.5"-2"



KLÖTZE TECHNIC NO. ▶ **KT43366**

OEM. REF. NO. 662 111 249

BEŞİNCİ TEKER TAMİR TAKIMI 3,5"-2"
FIFTH WHEEL REPAIR KIT 3,5" - 2"



KLÖTZE TECHNIC NO. ▶ **KT43372**

OEM. REF. NO. 662 101 710

BEŞİNCİ TEKER AŞINMA AYI 3.5"-2"
FIFTH WHEEL WEARING RING 3.5"-2"



KLÖTZE TECHNIC NO. ▶ **KT43373**

OEM. REF. NO. 662 101 563



KT No. Replaces Ref. No: Description Model / Details

BEŞİNCİ TEKER TAMİR TAKIMI 2"
FIFTH WHEEL REPAIR KIT 2"



KLÖTZE TECHNIC NO. ▶ **KT43374**

OEM. REF. NO. **RK63503**

BEŞİNCİ TEKER TAMİR TAKIMI 2"
FIFTH WHEEL REPAIR KIT 2"



KLÖTZE TECHNIC NO. ▶ **KT43375**

OEM. REF. NO. **RS91103**

BEŞİNCİ TEKER TAMİR TAKIMI 2"
FIFTH WHEEL REPAIR KIT 2"



KLÖTZE TECHNIC NO. ▶ **KT43376**

OEM. REF. NO. **RS91114**

BEŞİNCİ TEKER TAMİR TAKIMI 2"
FIFTH WHEEL REPAIR KIT 2"



KLÖTZE TECHNIC NO. ▶ **KT43377**

OEM. REF. NO. **RK3510-TR2**

BEŞİNCİ TEKER TAMİR TAKIMI 2"
FIFTH WHEEL REPAIR KIT 2"



KLÖTZE TECHNIC NO. ▶ **KT43378**

OEM. REF. NO. **RS91086-1**

BEŞİNCİ TEKER SABİTLEME PİMİ
FIFTH WHEEL MOUNTING PIN



KLÖTZE TECHNIC NO. ▶ **KT43379**

OEM. REF. NO. **XE-06356-KTL**



KT No. Replaces Ref. No: Description Model / Details

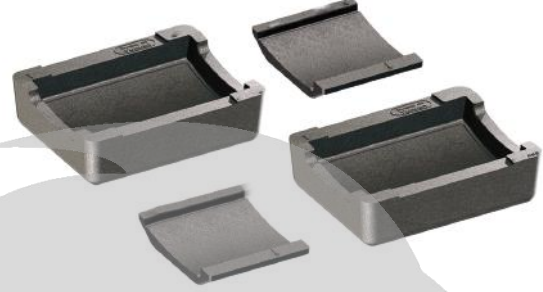
BEŞİNCİ TEKER KAUKUK TAMİR TAKIMI 2"
FIFTH WHEEL REPAIR KIT 2"



KLÖTZE TECHNIC NO. ▶ **KT43380**

OEM. REF. NO.

BEŞİNCİ TEKER KAUKUK TAMİR TAKIMI 3.5"
FIFTH WHEEL REPAIR KIT 3,5"



KLÖTZE TECHNIC NO. ▶ **KT43381**

OEM. REF. NO.

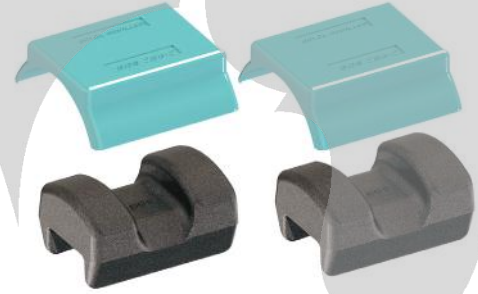
BEŞİNCİ TEKER PLASTİK TAMİR TAKIMI
FIFTH WHEEL COLLAR



KLÖTZE TECHNIC NO. ▶ **KT43382**

OEM. REF. NO.

BEŞİNCİ TEKER PLASTİK TAMİR TAKIMI
FIFTH WHEEL REPAIR KIT



KLÖTZE TECHNIC NO. ▶ **KT43383**

OEM. REF. NO.

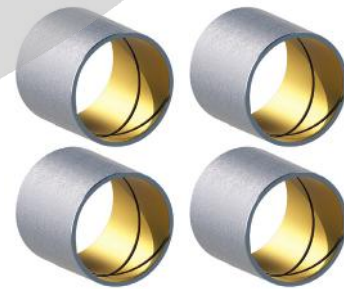
BEŞİNCİ TEKER PLASTİK TAMİR TAKIMI
FIFTH WHEEL REPAIR KIT 2"



KLÖTZE TECHNIC NO. ▶ **KT43384**

OEM. REF. NO.

BEŞİNCİ TEKER MAFSAL BURCU
FIFTH WHEEL BUSHING



KLÖTZE TECHNIC NO. ▶ **KT43385**

OEM. REF. NO. SK 2504-16



KT No. Replaces Ref. No: Description Model / Details

BEŞİNCİ TEKER TAMİR TAKIMI 2"
FIFTH WHEEL REPAIR KIT 2"



KLÖTZE TECHNIC NO. ▶ KT43386

OEM. REF. NO.

BEŞİNCİ TEKER TAMİR TAKIMI 2"
FIFTH WHEEL REPAIR KIT 2"



KLÖTZE TECHNIC NO. ▶ KT43387

OEM. REF. NO. 662 101 334

BEŞİNCİ TEKER TAMİR TAKIMI 2"
FIFTH WHEEL REPAIR KIT 2"



KLÖTZE TECHNIC NO. ▶ KT43388

OEM. REF. NO. 662 101 315

BEŞİNCİ TEKER TAMİR TAKIMI 2"
FIFTH WHEEL REPAIR KIT 2"



KLÖTZE TECHNIC NO. ▶ KT43389

OEM. REF. NO. 662 101 388

BEŞİNCİ TEKER TAMİR TAKIMI 2"
FIFTH WHEEL REPAIR KIT 2"



KLÖTZE TECHNIC NO. ▶ KT43390

OEM. REF. NO. 662 101 383

BEŞİNCİ TEKER TAMİR TAKIMI 3,5"
FIFTH WHEEL REPAIR KIT 3,5"



KLÖTZE TECHNIC NO. ▶ KT43391

OEM. REF. NO. 662 101 457





KT No. Replaces Ref. No: Description Model / Details

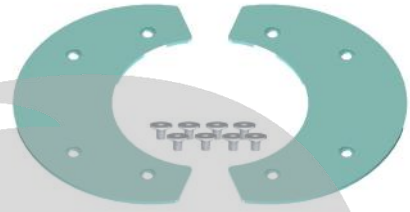
BEŞİNCİ TEKER AŞINMA PLASTİĞİ
FIFTH WHEEL SLIDE PART



KLÖTZE TECHNIC NO. ▶ KT43392

OEM. REF. NO. SK 3106-003

BEŞİNCİ TEKER AŞINMA PLASTİĞİ
FIFTH WHEEL SLIDE PART



KLÖTZE TECHNIC NO. ▶ KT43393

OEM. REF. NO. SKE001007020

BEŞİNCİ TEKER AŞINMA PLASTİĞİ
FIFTH WHEEL SLIDE PART



KLÖTZE TECHNIC NO. ▶ KT43394

OEM. REF. NO. 662 101 469

BEŞİNCİ TEKER AŞINMA PLASTİĞİ
FIFTH WHEEL SLIDE PART



KLÖTZE TECHNIC NO. ▶ KT43395

OEM. REF. NO. 662 101 450

BEŞİNCİ TEKER AŞINMA PLASTİK CİVATASI
FIFTH WHEEL SLIDE PART BOLTS



KLÖTZE TECHNIC NO. ▶ KT43396

OEM. REF. NO.

BEŞİNCİ TEKER AŞINMA PLASTİĞİ CİVATASI
FIFTH WHEEL SLIDE PART BOLT



KLÖTZE TECHNIC NO. ▶ KT43397

OEM. REF. NO. 662 130 114



KT No. Replaces Ref. No: Description Model / Details

KİNG PİMİ 2"
KING PIN 2"



KLÖTZE TECHNIC NO. ▶ **KT43398**

OEM. REF. NO. **KZ 1012**

KİNG PİMİ KAFASI 2"
KING PIN 2" HEAD



KLÖTZE TECHNIC NO. ▶ **KT43399**

OEM. REF. NO. **KZ 1012-01**

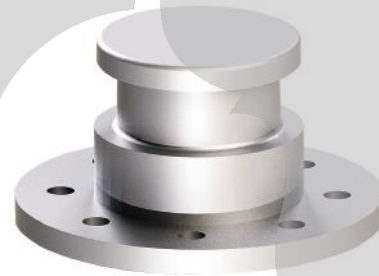
KİNG PİMİ 3.5"
KING PIN 3.5"



KLÖTZE TECHNIC NO. ▶ **KT43400**

OEM. REF. NO. **KZ 1412**

KİNG PİMİ KAFASI 3.5"
KING PIN 3.5" HEAD



KLÖTZE TECHNIC NO. ▶ **KT43401**

OEM. REF. NO. **KZ 1412-01**

KİNG PİMİ APARATI
KING PIN APPARATUS



KLÖTZE TECHNIC NO. ▶ **KT43402**

OEM. REF. NO.

KİNG PİMİ TASI
KING PIN PLATES



KLÖTZE TECHNIC NO. ▶ **KT43403**

OEM. REF. NO. **KZ 1412-02**





KT No. Replaces Ref. No: Description Model / Details

BEŞİNCİ TEKER AYAĞI H135
FIFTH WHEEL PEDESTAL H135



KLÖTZE TECHNIC NO. ▶ **KT43404**

OEM. REF. NO.

BEŞİNCİ TEKER AYAĞI H150
FIFTH WHEEL PEDESTAL H150



KLÖTZE TECHNIC NO. ▶ **KT43405**

OEM. REF. NO. SK 2104-02

BEŞİNCİ TEKER AYAĞI H185
FIFTH WHEEL PEDESTAL H185



KLÖTZE TECHNIC NO. ▶ **KT43406**

OEM. REF. NO. SK 2104-01

BEŞİNCİ TEKER AYAĞI H210
FIFTH WHEEL PEDESTAL H210



KLÖTZE TECHNIC NO. ▶ **KT43407**

OEM. REF. NO.

BEŞİNCİ TEKER AYAĞI H250
FIFTH WHEEL PEDESTAL H250



KLÖTZE TECHNIC NO. ▶ **KT43409**

OEM. REF. NO. SK 2104-14

BEŞİNCİ TEKER AYAĞI H300
FIFTH WHEEL PEDESTAL H300



KLÖTZE TECHNIC NO. ▶ **KT43408**

OEM. REF. NO. SK 2104-20



KT No. Replaces Ref. No: Description Model / Details

BEŞİNCİ TEKER AYAĞI H135
FIFTH WHEEL PEDESTAL H135



KLÖTZE TECHNIC NO. ▶ **KT43410**

OEM. REF. NO.

BEŞİNCİ TEKER AYAĞI H150
FIFTH WHEEL PEDESTAL H150



KLÖTZE TECHNIC NO. ▶ **KT43411**

OEM. REF. NO. SKE001005620

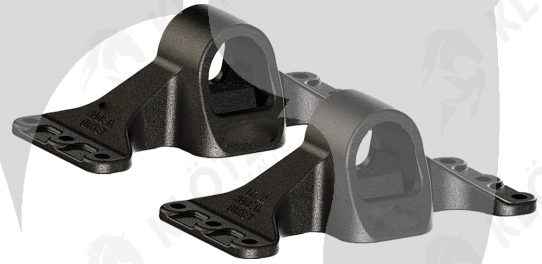
BEŞİNCİ TEKER AYAĞI H185
FIFTH WHEEL PEDESTAL H185



KLÖTZE TECHNIC NO. ▶ **KT43412**

OEM. REF. NO. SKE001005720

BEŞİNCİ TEKER AYAĞI H210
FIFTH WHEEL PEDESTAL H210



KLÖTZE TECHNIC NO. ▶ **KT43413**

OEM. REF. NO. SKE001005820

BEŞİNCİ TEKER AYAĞI H220
FIFTH WHEEL PEDESTAL H220



KLÖTZE TECHNIC NO. ▶ **KT43414**

OEM. REF. NO.

BEŞİNCİ TEKER AYAĞI H190
FIFTH WHEEL PEDESTAL H190



KLÖTZE TECHNIC NO. ▶ **KT43415**

OEM. REF. NO. SK 2404-01



KT No. Replaces Ref. No: Description Model / Details

BEŞİNCİ TEKER YÜKSELTME TAKOZU H50
FIFTH WHEEL RAISING WEDGE H50



KLÖTZE TECHNIC NO. ▶ KT43416

OEM. REF. NO.

BEŞİNCİ TEKER YÜKSELTME TAKOZU H40
FIFTH WHEEL RAISING WEDGE H40



KLÖTZE TECHNIC NO. ▶ KT43417

OEM. REF. NO.

BEŞİNCİ TEKER YÜKSELTME TAKOZU H30
FIFTH WHEEL RAISING WEDGE H30



KLÖTZE TECHNIC NO. ▶ KT43418

OEM. REF. NO.

BEŞİNCİ TEKER YÜKSELTME TAKOZU H50
FIFTH WHEEL RAISING WEDGE H50



KLÖTZE TECHNIC NO. ▶ KT43419

OEM. REF. NO.

BEŞİNCİ TEKER YÜKSELTME TAKOZU H40
FIFTH WHEEL RAISING WEDGE H40



KLÖTZE TECHNIC NO. ▶ KT43420

OEM. REF. NO.

BEŞİNCİ TEKER YÜKSELTME TAKOZU H30
FIFTH WHEEL RAISING WEDGE H30



KLÖTZE TECHNIC NO. ▶ KT43421

OEM. REF. NO.



KT No. Replaces Ref. No: Description Model / Details

BEŞİNCİ TEKER YÜKSELTME TAKOZU H50
FIFTH WHEEL RAISING WEDGE H50



KLÖTZE TECHNIC NO. ▶ **KT43422**

OEM. REF. NO.

BEŞİNCİ TEKER YÜKSELTME TAKOZU H40
FIFTH WHEEL RAISING WEDGE H40



KLÖTZE TECHNIC NO. ▶ **KT43423**

OEM. REF. NO.

BEŞİNCİ TEKER YÜKSELTME TAKOZU H30
FIFTH WHEEL RAISING WEDGE H30



KLÖTZE TECHNIC NO. ▶ **KT43424**

OEM. REF. NO.

BEŞİNCİ TEKER YÜKSELTME TAKOZU H50
FIFTH WHEEL RAISING WEDGE H50



KLÖTZE TECHNIC NO. ▶ **KT43425**

OEM. REF. NO.

BEŞİNCİ TEKER YÜKSELTME TAKOZU H40
FIFTH WHEEL RAISING WEDGE H40



KLÖTZE TECHNIC NO. ▶ **KT43426**

OEM. REF. NO.

BEŞİNCİ TEKER YÜKSELTME TAKOZU H30
FIFTH WHEEL RAISING WEDGE H30



KLÖTZE TECHNIC NO. ▶ **KT43427**

OEM. REF. NO.



KT No. Replaces Ref. No: Description Model / Details

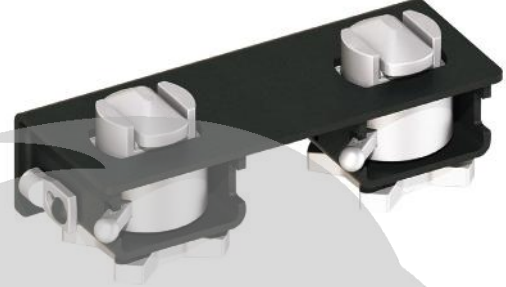
KONTEYNER KİLİDİ 52 MM
CONTAINER LOCK 52 MM



KLÖTZE TECHNIC NO. ▶ **KT43428**

OEM. REF. NO.

KONTEYNER KİLİDİ 52 MM ÇİFTLİ MODEL
CONTAINER LOCK 52 MM DOUBLE TYPE



KLÖTZE TECHNIC NO. ▶ **KT43429**

OEM. REF. NO.

KONTEYNER KİLİDİ 38 MM ORTA MODEL
CONTAINER LOCK 38 MM MEDIUM TYPE



KLÖTZE TECHNIC NO. ▶ **KT43430**

OEM. REF. NO.

KONTEYNER KİLİDİ 38 MM ORTA - ÇİFTLİ MODEL
CONTAINER LOCK 38 MM MEDIUM-DOUBLE TYPE



KLÖTZE TECHNIC NO. ▶ **KT43431**

OEM. REF. NO.

KONTEYNER KİLİDİ 38 MM
CONTAINER LOCK 38 MM



KLÖTZE TECHNIC NO. ▶ **KT43432**

OEM. REF. NO.

KONTEYNER KİLİDİ 38 MM ÇİFTLİ MODEL
CONTAINER LOCK 38 MM DOUBLE TYPE



KLÖTZE TECHNIC NO. ▶ **KT43433**

OEM. REF. NO.



KT No. Replaces Ref. No: Description Model / Details

KONTEYNER KİLİDİ 52 MM YATARLI MODEL
CONTAINER LOCK 52 MM



KLÖTZE TECHNIC NO. ▶ **KT43434**

OEM. REF. NO.

KONTEYNER KİLİDİ 52 MM ASANSÖR MODEL (KÜTÜK)
CONTAINER LOCK 52 MM



KLÖTZE TECHNIC NO. ▶ **KT43435**

OEM. REF. NO.

KONTEYNER KİLİDİ 52 MM ASANSÖR MODEL (BORU)
CONTAINER LOCK 52 MM



KLÖTZE TECHNIC NO. ▶ **KT43436**

OEM. REF. NO.

KONTEYNER KİLİDİ 52 MM ARKA MODEL
CONTAINER LOCK 52 MM



KLÖTZE TECHNIC NO. ▶ **KT43437**

OEM. REF. NO.

KONTEYNER KİLİDİ 38 MM ALTTAN KOLLU
CONTAINER LOCK 38 MM



KLÖTZE TECHNIC NO. ▶ **KT43438**

OEM. REF. NO.

KONTEYNER KÖŞE BAĞLANTISI
CONTAINER CORNER



KLÖTZE TECHNIC NO. ▶ **KT43439**

OEM. REF. NO.

FIFTH WHEEL 2''



KLÖTZE
TECHNIC

www.klotzetechnik.de



KT No. Replaces Ref. No: Description Model / Details

BEŞİNCİ TEKER 2"
 FIFTH WHEEL 2"



KLÖTZE TECHNIC NO. ▶ KT43440

OEM. REF. NO. JSK 37C185

BEŞİNCİ TEKER 2" AYAKSIZ
 FIFTH WHEEL 2" WITHOUT PEDESTAL



KLÖTZE TECHNIC NO. ▶ KT43441

OEM. REF. NO.

BEŞİNCİ TEKER SABİTLEME SEHPASI
H30-H90
 FIFTH WHEEL MOUNTING PLATES H30-H90



KLÖTZE TECHNIC NO. ▶ KT43442

OEM. REF. NO. MP 2102

BEŞİNCİ TEKER KİLİT KANCA 2"
 FIFTH WHEEL LOCK JAW 2"



KLÖTZE TECHNIC NO. ▶ KT43443

OEM. REF. NO. SK 3221-52

BEŞİNCİ TEKER KİLİT KANCA 2"
 FIFTH WHEEL LOCK JAW 2"



KLÖTZE TECHNIC NO. ▶ KT43444

OEM. REF. NO. SK 1489 Z

BEŞİNCİ TEKER KİLİT KANCA 2"
 FIFTH WHEEL LOCK JAW 2"



KLÖTZE TECHNIC NO. ▶ KT43445

OEM. REF. NO. SK 1489

BEŞİNCİ TEKER KİLİT KANCA 2" SOL
 FIFTH WHEEL LOCK JAW 2" LEFT



KLÖTZE TECHNIC NO. ▶ KT43446

OEM. REF. NO. SK 1489-L

BEŞİNCİ TEKER AŞINMA AYI 2" (3 DELİK)
 FIFTH WHEEL WEARING RING 2" (3 HOLES)



KLÖTZE TECHNIC NO. ▶ KT43447

OEM. REF. NO. SK 2121-51

BEŞİNCİ TEKER AŞINMA AYI 2"
(3 DELİK-CİVATASIZ)
 FIFTH WHEEL WEARING RING 2"
 (3 HOLES-WITHOUT BOLT)



KLÖTZE TECHNIC NO. ▶ KT43448

OEM. REF. NO. SK 2105-19



KT No. Replaces Ref. No: Description Model / Details

BEŞİNCİ TEKER AŞINMA AYI ÇİVATASI
FIFTH WHEEL WEARING RING BOLT



KLÖTZE TECHNIC NO. ▶ KT43449

OEM. REF. NO. SK 2121-07

BEŞİNCİ TEKER KİLİTLEME KAMASI 2"
FIFTH WHEEL LOCKING BOLT 2"



KLÖTZE TECHNIC NO. ▶ KT43450

OEM. REF. NO. SK 3205-06

BEŞİNCİ TEKER KİLİT KANCA 2"
FIFTH WHEEL LOCK JAW 2"



KLÖTZE TECHNIC NO. ▶ KT43451

OEM. REF. NO.

BEŞİNCİ TEKER AŞINMA AYI (2 DELİK)
FIFTH WHEEL WEARING RING 2" (2 HOLE)



KLÖTZE TECHNIC NO. ▶ KT43452

OEM. REF. NO.

BEŞİNCİ TEKER KAUCUK TAMİR TAKIMI 2"
FIFTH WHEEL RUBBER REPAIR KIT 2"



KLÖTZE TECHNIC NO. ▶ KT43453

OEM. REF. NO.

BEŞİNCİ TEKER KAUCUK TAKOZ 2" (ÜST)
FIFTH WHEEL RUBBER PART 2" (UPPER)



KLÖTZE TECHNIC NO. ▶ KT43454

OEM. REF. NO. SK 1259

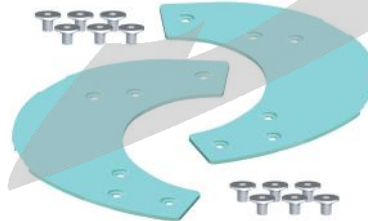
BEŞİNCİ TEKER KAUCUK TAKOZ 2" (ALT)
FIFTH WHEEL RUBBER PART 2" (LOWER)



KLÖTZE TECHNIC NO. ▶ KT43455

OEM. REF. NO. SK 2105-25

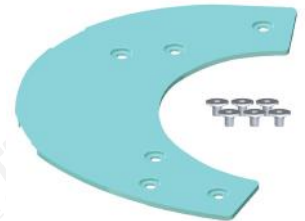
BEŞİNCİ TEKER AŞINMA PLASTİĞİ
FIFTH WHEEL SLIDE PART



KLÖTZE TECHNIC NO. ▶ KT43456

OEM. REF. NO. SK 3106-003

BEŞİNCİ TEKER AŞINMA PLASTİĞİ SOL
FIFTH WHEEL SLIDE PART (LEFT)



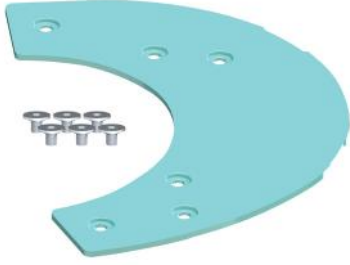
KLÖTZE TECHNIC NO. ▶ KT43457

OEM. REF. NO. SK 3105-129L



KT No. Replaces Ref. No: Description Model / Details

BEŞİNCİ TEKER AŞINMA PLASTİĞİ SAĞ
FIFTH WHEEL SLIDE PART (RIGHT)



KLÖTZE TECHNIC NO. ▶ KT43458

OEM. REF. NO. SK 3105-129R

BEŞİNCİ TEKER PLASTİK TAMİR TAKIMI
FIFTH WHEEL REPAIR KIT 2"



KLÖTZE TECHNIC NO. ▶ KT43459

OEM. REF. NO.

BEŞİNCİ TEKER KAUCUK TAKOZ (BORULU)
FIFTH WHEEL RUBBER PART 2"



KLÖTZE TECHNIC NO. ▶ KT43460

OEM. REF. NO. SK 2905-94

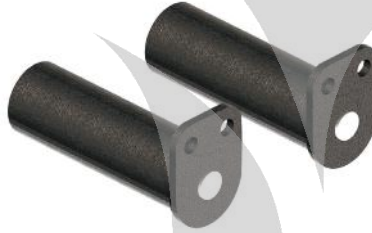
BEŞİNCİ TEKER PLASTİK TAKOZ
FIFTH WHEEL PLASTIC PART 2"



KLÖTZE TECHNIC NO. ▶ KT43461

OEM. REF. NO. SK 3105-95

BEŞİNCİ TEKER SABİTLEME PERNOSU
FIFTH WHEEL MOUNTING BOLT



KLÖTZE TECHNIC NO. ▶ KT43462

OEM. REF. NO. SK 3104-05

BEŞİNCİ TEKER PERNO SABİTLEME CİVATASI
(M12*18)
FIFTH WHEEL SPARE PART (M12*18)



KLÖTZE TECHNIC NO. ▶ KT43463

OEM. REF. NO. SK 29210-38

BEŞİNCİ TEKER KİLİT KANCA PİMİ (Ø20)
FIFTH WHEEL LOCK JAW PIN



KLÖTZE TECHNIC NO. ▶ KT43464

OEM. REF. NO. SK 2106-67

BEŞİNCİ TEKER KİLİT KANCA YAYI (Ø18)
FIFTH WHEEL LOCK JAW SPRING



KLÖTZE TECHNIC NO. ▶ KT43465

OEM. REF. NO. SK 847

BEŞİNCİ TEKER KİLİT KANCA SABİTLEME PİMİ
FIFTH WHEEL LOCK JAW PIN



KLÖTZE TECHNIC NO. ▶ KT43466

OEM. REF. NO. SK 2122-04



KT No. Replaces Ref. No: Description Model / Details

BEŞİNCİ TEKER AYAR CİVATASI (M16)
FIFTH WHEEL ADJUSTING SCREW



KLÖTZE TECHNIC NO. ▶ KT43467

OEM. REF. NO. SK 3105-150

BEŞİNCİ TEKER AYAR CİVATASI KARESİ
FIFTH WHEEL SPARE PART



KLÖTZE TECHNIC NO. ▶ KT43468

OEM. REF. NO. SK 3205-07

BEŞİNCİ TEKER YAĞLAMA TAKIMI
FIFTH WHEEL LUBRICATION KIT



KLÖTZE TECHNIC NO. ▶ KT43469

OEM. REF. NO. SK 3108-02

BEŞİNCİ TEKER EMNİYET YAYI
FIFTH WHEEL TENSION SPRING



KLÖTZE TECHNIC NO. ▶ KT43470

OEM. REF. NO. SK 3105-20

BEŞİNCİ TEKER ÇEKME KOLU
FIFTH WHEEL HANDLE



KLÖTZE TECHNIC NO. ▶ KT43471

OEM. REF. NO. SK 3105-15

BEŞİNCİ TEKER ÇEKME KOLU
FIFTH WHEEL HANDLE



KLÖTZE TECHNIC NO. ▶ KT43472

OEM. REF. NO. SK 3105-115

BEŞİNCİ TEKER ARAKOLU
FIFTH WHEEL LEVER



KLÖTZE TECHNIC NO. ▶ KT43473

OEM. REF. NO. SK 3105-18

BEŞİNCİ TEKER BAĞLANTI CİVATASI (M16*110)
FIFTH WHEEL COUNTERSUNK BOLT (M16*110)



KLÖTZE TECHNIC NO. ▶ KT43474

OEM. REF. NO. SK 2121-15

BEŞİNCİ TEKER AYAK SABİTLEME KEPİ
FIFTH WHEEL BRIDGE



KLÖTZE TECHNIC NO. ▶ KT43475

OEM. REF. NO. SK 1372



KT No. Replaces Ref. No: Description Model / Details

**BEŞİNCİ TEKER SABİTLEME CİVATASI
M16*45**
FIFTH WHEEL MOUNTING BOLT M16*45



KLÖTZE TECHNIC NO. ▶ KT43476

OEM. REF. NO. SK 3110-009

**BEŞİNCİ TEKER KİLİTLEME KAMASI
SABİTLEME CİVATASI (M20*100)**
FIFTH WHEEL LOCKING BOLT MOUNTING BOLT
(M20*100)



KLÖTZE TECHNIC NO. ▶ KT43477

OEM. REF. NO. SK 3221-01

**BEŞİNCİ TEKER KOL
SABİTLEME CİVATASI (M16*40)**
FIFTH WHEEL LOCKING BOLT MOUNTING BOLT (M16*40)



KLÖTZE TECHNIC NO. ▶ KT43478

OEM. REF. NO. SK 1513

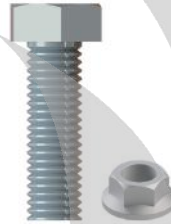
BEŞİNCİ TEKER CIRT KELEPÇE
FIFTH WHEEL CABLE TIE



KLÖTZE TECHNIC NO. ▶ KT43479

OEM. REF. NO. SK 3121-13

BEŞİNCİ TEKER YEDEK PARÇA SABİTLEME CİVATASI
FIFTH WHEEL SPARE PART



KLÖTZE TECHNIC NO. ▶ KT43480

OEM. REF. NO. SK 2421-50

BEŞİNCİ TEKER KOL KİLİTLEME CİVATASI (M10*70)
FIFTH WHEEL SPARE PART (M10*70)



KLÖTZE TECHNIC NO. ▶ KT43481

OEM. REF. NO. SK 3521-03

BEŞİNCİ TEKER KOL KİLİTLEME YEDEK PARÇASI
FIFTH WHEEL SPARE PART



KLÖTZE TECHNIC NO. ▶ KT43482

OEM. REF. NO. SK 3121-52

BEŞİNCİ TEKER TAMİR TAKIMI
FIFTH WHEEL REPAIR KIT



KLÖTZE TECHNIC NO. ▶ KT43483

OEM. REF. NO. SK 3121-59

KT No. Replaces Ref. No: Description Model / Details

BEŞİNCİ TEKER AYAĞI H135
 FIFTH WHEEL PEDESTAL H135



KLÖTZE TECHNIC NO. ▶ **KT43484**

OEM. REF. NO.

BEŞİNCİ TEKER AYAĞI H150
 FIFTH WHEEL PEDESTAL H150



KLÖTZE TECHNIC NO. ▶ **KT43485**

OEM. REF. NO. SK 2104-02

BEŞİNCİ TEKER AYAĞI H185
 FIFTH WHEEL PEDESTAL H185



KLÖTZE TECHNIC NO. ▶ **KT43486**

OEM. REF. NO. SK 2104-01

BEŞİNCİ TEKER AYAĞI H210
 FIFTH WHEEL PEDESTAL H210



KLÖTZE TECHNIC NO. ▶ **KT43487**

OEM. REF. NO.

BEŞİNCİ TEKER AYAĞI H250
 FIFTH WHEEL PEDESTAL H250



KLÖTZE TECHNIC NO. ▶ **KT43488**

OEM. REF. NO. SK 2104-14

BEŞİNCİ TEKER AYAĞI H300
 FIFTH WHEEL PEDESTAL H300



KLÖTZE TECHNIC NO. ▶ **KT43489**

OEM. REF. NO. SK 2104-20

BEŞİNCİ TEKER YÜKSELTME TAKOZU H50
 FIFTH WHEEL RAISING WEDGE H50



KLÖTZE TECHNIC NO. ▶ **KT43490**

OEM. REF. NO.

BEŞİNCİ TEKER YÜKSELTME TAKOZU H40
 FIFTH WHEEL RAISING WEDGE H40



KLÖTZE TECHNIC NO. ▶ **KT43491**

OEM. REF. NO.

BEŞİNCİ TEKER YÜKSELTME TAKOZU H30
 FIFTH WHEEL RAISING WEDGE H30



KLÖTZE TECHNIC NO. ▶ **KT43492**

OEM. REF. NO.

KT No. Replaces Ref. No: Description Model / Details

BEŞİNCİ TEKER TAMİR TAKIMI 2"
 FIFTH WHEEL REPAIR KIT 2"



KLÖTZE TECHNIC NO. ▶ **KT43493**

OEM. REF. NO. SK 3221-50

BEŞİNCİ TEKER TAMİR TAKIMI 2"
 FIFTH WHEEL REPAIR KIT 2"



KLÖTZE TECHNIC NO. ▶ **KT43494**

OEM. REF. NO.

BEŞİNCİ TEKER TAMİR TAKIMI 2"
 FIFTH WHEEL REPAIR KIT 2"



KLÖTZE TECHNIC NO. ▶ **KT43495**

OEM. REF. NO.

BEŞİNCİ TEKER TAMİR TAKIMI 2"
 FIFTH WHEEL REPAIR KIT 2"



KLÖTZE TECHNIC NO. ▶ **KT43496**

OEM. REF. NO.

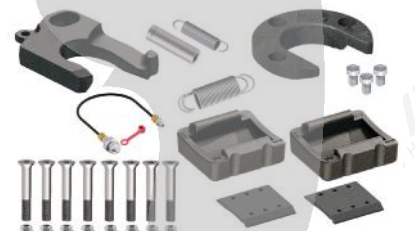
BEŞİNCİ TEKER TAMİR TAKIMI 2"
 FIFTH WHEEL REPAIR KIT 2"



KLÖTZE TECHNIC NO. ▶ **KT43497**

OEM. REF. NO.

BEŞİNCİ TEKER TAMİR TAKIMI 2"
 FIFTH WHEEL REPAIR KIT 2"



KLÖTZE TECHNIC NO. ▶ **KT43498**

OEM. REF. NO.

BEŞİNCİ TEKER TAMİR TAKIMI 2"
 FIFTH WHEEL REPAIR KIT 2"



KLÖTZE TECHNIC NO. ▶ **KT43499**

OEM. REF. NO. SK 3121-50

BEŞİNCİ TEKER TAMİR TAKIMI 2"
 FIFTH WHEEL REPAIR KIT 2"



KLÖTZE TECHNIC NO. ▶ **KT43500**

OEM. REF. NO. SK 3121-50 Z

BEŞİNCİ TEKER TAMİR TAKIMI
 FIFTH WHEEL SPARE PART



KLÖTZE TECHNIC NO. ▶ **KT43501**

OEM. REF. NO. SK 3121-063

KT No. Replaces Ref. No: Description Model / Details

BEŞİNCİ TEKER TAMİR TAKIMI 2"
 FIFTH WHEEL REPAIR KIT 2"



KLÖTZE TECHNIC NO. ▶ KT43502

OEM. REF. NO. SK 3121-51

BEŞİNCİ TEKER TAMİR TAKIMI 2"
 FIFTH WHEEL REPAIR KIT 2"



KLÖTZE TECHNIC NO. ▶ KT43503

OEM. REF. NO. SK 3121-56 Z

BEŞİNCİ TEKER TAMİR TAKIMI 2"
 FIFTH WHEEL REPAIR KIT 2"



KLÖTZE TECHNIC NO. ▶ KT43504

OEM. REF. NO. SK 3121-56 Z

BEŞİNCİ TEKER TAMİR TAKIMI 2"
 FIFTH WHEEL REPAIR KIT 2"



KLÖTZE TECHNIC NO. ▶ KT43505

OEM. REF. NO. SK 3121-60 Z

BEŞİNCİ TEKER TAMİR TAKIMI 2"
 FIFTH WHEEL REPAIR KIT 2"



KLÖTZE TECHNIC NO. ▶ KT43506

OEM. REF. NO. SK 3221-50 Z

BEŞİNCİ TEKER TAMİR TAKIMI 2"
 FIFTH WHEEL REPAIR KIT 2"



KLÖTZE TECHNIC NO. ▶ KT43507

OEM. REF. NO. SK 3221-52 Z

BEŞİNCİ TEKER TAMİR TAKIMI 2"
 FIFTH WHEEL REPAIR KIT 2"



KLÖTZE TECHNIC NO. ▶ KT43508

OEM. REF. NO. SK 3108-05

BEŞİNCİ TEKER TAMİR TAKIMI 2"
 FIFTH WHEEL REPAIR KIT 2"



KLÖTZE TECHNIC NO. ▶ KT43509

OEM. REF. NO. SK 2121-69

BEŞİNCİ TEKER TAMİR TAKIMI 2"
 FIFTH WHEEL REPAIR KIT 2"



KLÖTZE TECHNIC NO. ▶ KT43510

OEM. REF. NO. SK 3121-072 Z



KT No. Replaces Ref. No: Description Model / Details

BEŞİNCİ TEKER TAMİR TAKIMI 2"
FIFTH WHEEL REPAIR KIT 2"



KLÖTZE TECHNIC NO. ▶ **KT43511**

OEM. REF. NO. SK 3121-58

BEŞİNCİ TEKER TAMİR TAKIMI 2"
FIFTH WHEEL REPAIR KIT 2"



KLÖTZE TECHNIC NO. ▶ **KT43512**

OEM. REF. NO. SK 3121-61

BEŞİNCİ TEKER TAMİR TAKIMI 2" (KISA)
FIFTH WHEEL REPAIR KIT 2"



KLÖTZE TECHNIC NO. ▶ **KT43513**

OEM. REF. NO. SK 2921-051



FIFTH WHEEL 2''



KLÖTZE
TECHNIC

www.klotzetechnik.de



KT No. Replaces Ref. No: Description Model / Details

BEŞİNCİ TEKER KİLİT KANCA 2"
 FIFTH WHEEL LOCK JAW 2"



KLÖTZE TECHNIC NO. ▶ KT43514

OEM. REF. NO. SK 3221-52

BEŞİNCİ TEKER KİLİT KANCA 2"
 FIFTH WHEEL LOCK JAW 2"



KLÖTZE TECHNIC NO. ▶ KT43515

OEM. REF. NO. SK 1489 Z

BEŞİNCİ TEKER KİLİT KANCA 2"
 FIFTH WHEEL LOCK JAW 2"

KLÖTZE TECHNIC NO. ▶ KT43516

OEM. REF. NO. SK 1489

BEŞİNCİ TEKER AŞINMA AYI (4 DELİK)
 FIFTH WHEEL WEARING RING (4 HOLES)



KLÖTZE TECHNIC NO. ▶ KT43517

OEM. REF. NO.

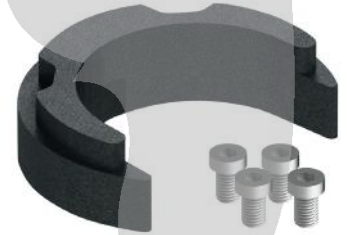
BEŞİNCİ TEKER AŞINMA AYI (4 DELİK)
 FIFTH WHEEL WEARING RING (4 HOLES WITHOUT BOLT)



KLÖTZE TECHNIC NO. ▶ KT43518

OEM. REF. NO.

BEŞİNCİ TEKER TAMİR TAKIMI 2"
 FIFTH WHEEL REPAIR KIT 2"



KLÖTZE TECHNIC NO. ▶ KT43519

OEM. REF. NO. SKE001740020

BEŞİNCİ TEKER AŞINMA AYI 2"
(4 DELİK - PLASTİK)
 FIFTH WHEEL WEARING RING 2" (4 HOLES-PLASTIC)



KLÖTZE TECHNIC NO. ▶ KT43520

OEM. REF. NO. SK 3105-94

BEŞİNCİ TEKER AŞINMA AYI CİVATASI
 FIFTH WHEEL WEARING RING BOLT



KLÖTZE TECHNIC NO. ▶ KT43521

OEM. REF. NO. SK 3105-93

BEŞİNCİ TEKER AŞINMA AYI PLASTİĞİ
 FIFTH WHEEL WEARING RING PART



KLÖTZE TECHNIC NO. ▶ KT43522

OEM. REF. NO. SK 3105-92



KT No. Replaces Ref. No: Description Model / Details

BEŞİNCİ TEKER AŞINMA AYI CİVATASI
FIFTH WHEEL WEARING RING BOLT



KLÖTZE TECHNIC NO. ▶ KT43523

OEM. REF. NO. SK 3121-55

BEŞİNCİ TEKER YEDEK PARÇA
FIFTH WHEEL SPARE PART



KLÖTZE TECHNIC NO. ▶ KT43524

OEM. REF. NO. SKE001440000

BEŞİNCİ TEKER KİLİTLEME KAMASI 2"
FIFTH WHEEL LOCKING BOLT 2"



KLÖTZE TECHNIC NO. ▶ KT43525

OEM. REF. NO.

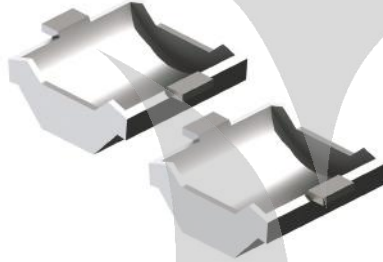
BEŞİNCİ TEKER PLASTİK TAMİR TAKIMI
FIFTH WHEEL COLLAR



KLÖTZE TECHNIC NO. ▶ KT43526

OEM. REF. NO.

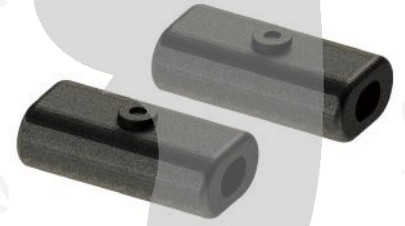
BEŞİNCİ TEKER PLASTİK TAKOZ
FIFTH WHEEL PLASTIC COLLAR



KLÖTZE TECHNIC NO. ▶ KT43527

OEM. REF. NO.

BEŞİNCİ TEKER KAUÇUK TAKOZ
RUBBER PART



KLÖTZE TECHNIC NO. ▶ KT43528

OEM. REF. NO.

BEŞİNCİ TEKER AYAK SABİTLEME TAKIMI
(M20*80)
FIFTH WHEEL COUNTERSUNK BOLT (M20*80)



KLÖTZE TECHNIC NO. ▶ KT43529

OEM. REF. NO. SKE001011400

BEŞİNCİ TEKER SABİTLEME KEPİ
FIFTH WHEEL BRIDGE



KLÖTZE TECHNIC NO. ▶ KT43530

OEM. REF. NO.

BEŞİNCİ TEKER KİLİTLEME KAMA CİVATASI
FIFTH WHEEL LOCKING BOLT PART



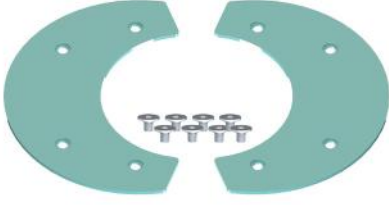
KLÖTZE TECHNIC NO. ▶ KT43531

OEM. REF. NO.



KT No. Replaces Ref. No: Description Model / Details

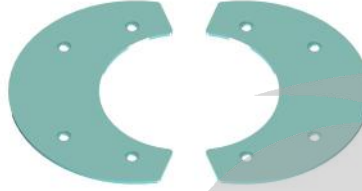
BEŞİNCİ TEKER AŞINMA PLASTİĞİ
FIFTH WHEEL SLIDE PART



KLÖTZE TECHNIC NO. ▶ KT43532

OEM. REF. NO. SKE001007020

**BEŞİNCİ TEKER AŞINMA PLASTİĞİ (CİVA-
TAŞIZ)**
FIFTH WHEEL SLIDE PART (WITHOUT BOLT)



KLÖTZE TECHNIC NO. ▶ KT43533

OEM. REF. NO.

BEŞİNCİ TEKER AŞINMA PLASTİK CİVATASI
FIFTH WHEEL SLIDE PART BOLTS



KLÖTZE TECHNIC NO. ▶ KT43534

OEM. REF. NO.

BEŞİNCİ TEKER AYAR CİVATASI TAKIMI 2"
FIFTH WHEEL ADJUSTING SCREW



KLÖTZE TECHNIC NO. ▶ KT43536

OEM. REF. NO. SKE500740220

BEŞİNCİ TEKER YÜKSELTME TAKOZU H50
FIFTH WHEEL RAISING WEDGE H50



KLÖTZE TECHNIC NO. ▶ KT43537

OEM. REF. NO.

BEŞİNCİ TEKER YÜKSELTME TAKOZU H40
FIFTH WHEEL RAISING WEDGE H40



KLÖTZE TECHNIC NO. ▶ KT43535

OEM. REF. NO.

BEŞİNCİ TEKER YÜKSELTME TAKOZU H30
FIFTH WHEEL RAISING WEDGE H30



KLÖTZE TECHNIC NO. ▶ KT43538

OEM. REF. NO.

BEŞİNCİ TEKER AYAĞI H185
FIFTH WHEEL PEDESTAL H185



KLÖTZE TECHNIC NO. ▶ KT43539

OEM. REF. NO. SKE001005720

BEŞİNCİ TEKER AYAĞI H210
FIFTH WHEEL PEDESTAL H210



KLÖTZE TECHNIC NO. ▶ KT43540

OEM. REF. NO. SKE001005820

KT No. Replaces Ref. No: Description Model / Details

BEŞİNCİ TEKER TAMİR TAKIMI 2"
 FIFTH WHEEL REPAIR KIT 2"



KLÖTZE TECHNIC NO. ▶ KT43541

OEM. REF. NO.

BEŞİNCİ TEKER TAMİR TAKIMI 2"
 FIFTH WHEEL REPAIR KIT 2"



KLÖTZE TECHNIC NO. ▶ KT43542

OEM. REF. NO.

BEŞİNCİ TEKER TAMİR TAKIMI 2"
 FIFTH WHEEL REPAIR KIT 2"



KLÖTZE TECHNIC NO. ▶ KT43543

OEM. REF. NO.

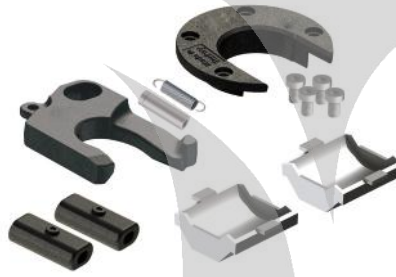
BEŞİNCİ TEKER TAMİR TAKIMI 2"
 FIFTH WHEEL REPAIR KIT 2"



KLÖTZE TECHNIC NO. ▶ KT43544

OEM. REF. NO.

BEŞİNCİ TEKER TAMİR TAKIMI 2"
 FIFTH WHEEL REPAIR KIT 2"



KLÖTZE TECHNIC NO. ▶ KT43545

OEM. REF. NO.

BEŞİNCİ TEKER TAMİR TAKIMI 2"
 FIFTH WHEEL REPAIR KIT 2"



KLÖTZE TECHNIC NO. ▶ KT43546

OEM. REF. NO.

BEŞİNCİ TEKER TAMİR TAKIMI 2"
 FIFTH WHEEL REPAIR KIT 2"



KLÖTZE TECHNIC NO. ▶ KT43547

OEM. REF. NO.

BEŞİNCİ TEKER TAMİR TAKIMI 2"
 FIFTH WHEEL REPAIR KIT 2"



KLÖTZE TECHNIC NO. ▶ KT43548

OEM. REF. NO.

BEŞİNCİ TEKER TAMİR TAKIMI 2"
 FIFTH WHEEL REPAIR KIT 2"



KLÖTZE TECHNIC NO. ▶ KT43549

OEM. REF. NO.

KT No. Replaces Ref. No: Description Model / Details

BEŞİNCİ TEKER TAMİR TAKIMI 2"
 FIFTH WHEEL REPAIR KIT 2"



KLÖTZE TECHNIC NO. ▶ KT43550

OEM. REF. NO.

BEŞİNCİ TEKER TAMİR TAKIMI 2"
 FIFTH WHEEL REPAIR KIT 2"



KLÖTZE TECHNIC NO. ▶ KT43551

OEM. REF. NO.

BEŞİNCİ TEKER TAMİR TAKIMI 2"
 FIFTH WHEEL REPAIR KIT 2"



KLÖTZE TECHNIC NO. ▶ KT43552

OEM. REF. NO.

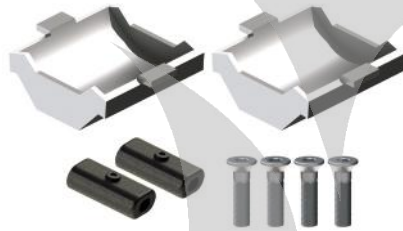
BEŞİNCİ TEKER TAMİR TAKIMI 2"
 FIFTH WHEEL REPAIR KIT 2"



KLÖTZE TECHNIC NO. ▶ KT43553

OEM. REF. NO. SKE001009720

BEŞİNCİ TEKER TAMİR TAKIMI 2"
 FIFTH WHEEL REPAIR KIT 2"



KLÖTZE TECHNIC NO. ▶ KT43554

OEM. REF. NO. SKE001370220

BEŞİNCİ TEKER TAMİR TAKIMI 2"
 FIFTH WHEEL REPAIR KIT 2"



KLÖTZE TECHNIC NO. ▶ KT43555

OEM. REF. NO. SKE001940001

BEŞİNCİ TEKER TAMİR TAKIMI 2"
 FIFTH WHEEL REPAIR KIT 2"



KLÖTZE TECHNIC NO. ▶ KT43556

OEM. REF. NO. SKE001640020

BEŞİNCİ TEKER TAMİR TAKIMI 2"
 FIFTH WHEEL REPAIR KIT 2"



KLÖTZE TECHNIC NO. ▶ KT43557

OEM. REF. NO. SKE001370020

BEŞİNCİ TEKER TAMİR TAKIMI 2"
 FIFTH WHEEL REPAIR KIT 2"



KLÖTZE TECHNIC NO. ▶ KT43558

OEM. REF. NO. SKE001530220



FIFTH WHEEL 2''



KLÖTZE
TECHNIC

www.klotzetechnik.de



KT No. Replaces Ref. No: Description Model / Details

BEŞİNCİ TEKER 2" SAC
 FIFTH WHEEL 2" (STEEL)



KLÖTZE TECHNIC NO. ▶ KT43559

OEM. REF. NO. JSK 36DV

BEŞİNCİ TEKER KİLİT KANCA 2"
 FIFTH WHEEL LOCK JAW 2"



KLÖTZE TECHNIC NO. ▶ KT43560

OEM. REF. NO. SK 3221-52

BEŞİNCİ TEKER KİLİT KANCA 2"
 FIFTH WHEEL LOCK JAW 2"



KLÖTZE TECHNIC NO. ▶ KT43561

OEM. REF. NO. SK 2121-52

BEŞİNCİ TEKER KİLİT KANCA 2"
 FIFTH WHEEL LOCK JAW 2"



KLÖTZE TECHNIC NO. ▶ KT43562

OEM. REF. NO. SK 2105-15

BEŞİNCİ TEKER KİLİT KANCA PİMİ
 FIFTH WHEEL LOCK JAW PIN



KLÖTZE TECHNIC NO. ▶ KT43563

OEM. REF. NO. SK 2121-13

BEŞİNCİ TEKER AŞINMA AYI 2" (3 DELİK)
 FIFTH WHEEL WEARING RING 2" (3 HOLES)



KLÖTZE TECHNIC NO. ▶ KT43564

OEM. REF. NO. SK 2121-51

BEŞİNCİ TEKER KİLİTLEME KAMASI 2"
 FIFTH WHEEL LOCKING BOLT 2"



KLÖTZE TECHNIC NO. ▶ KT43565

OEM. REF. NO. SK 2905-06

BEŞİNCİ TEKER TAMİR TAKIMI 2"
 FIFTH WHEEL REPAIR KIT 2"



KLÖTZE TECHNIC NO. ▶ KT43566

OEM. REF. NO. SK 2121-50

BEŞİNCİ TEKER TAMİR TAKIMI 2"
 FIFTH WHEEL REPAIR KIT 2"

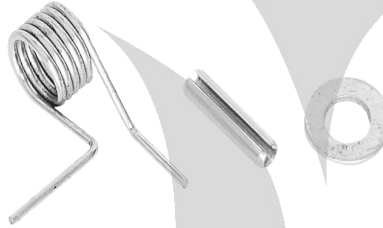
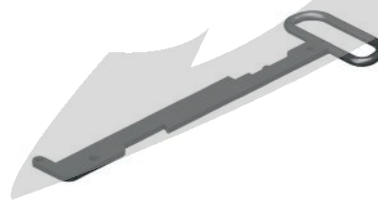


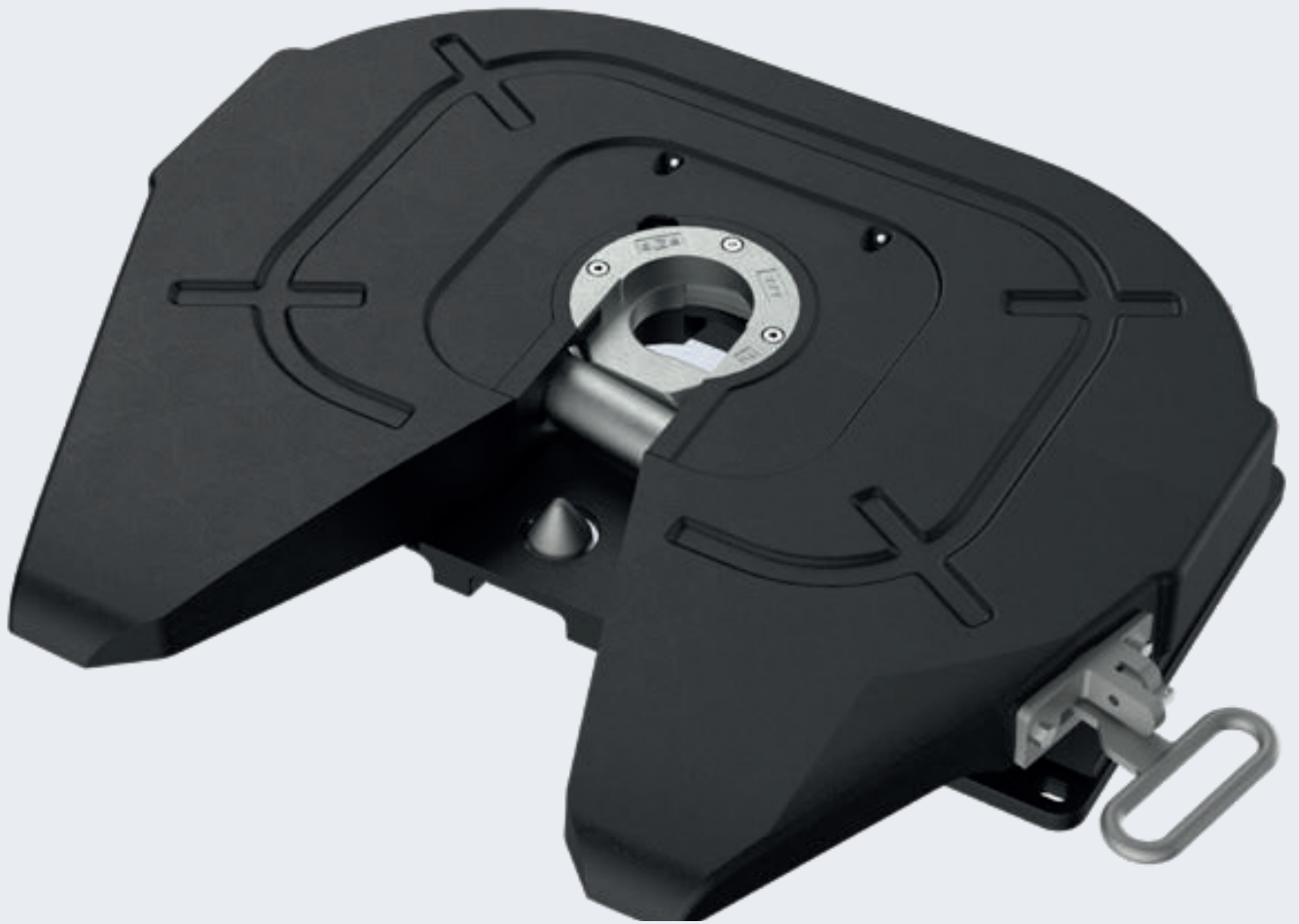
KLÖTZE TECHNIC NO. ▶ KT43567

OEM. REF. NO. SK 2121-68



KT No. Replaces Ref. No: Description Model / Details

BEŞİNCİ TEKER TAMİR TAKIMI 2"
FIFTH WHEEL REPAIR KIT 2"**KLÖTZE TECHNIC NO.** ▶ KT43568**OEM. REF. NO.** SK 2621-02**BEŞİNCİ TEKER YEDEK PARÇA (M10*35)**
FIFTH WHEEL SPARE PART (M10*35)**KLÖTZE TECHNIC NO.** ▶ KT43569**OEM. REF. NO.** SK 2421-50**BEŞİNCİ TEKER KOL KİLİTLEME YEDEK PARÇASI**
FIFTH WHEEL SPARE PART**KLÖTZE TECHNIC NO.** ▶ KT43570**OEM. REF. NO.** SK 1974**BEŞİNCİ TEKER AYAR CİVATASI (M16)**
FIFTH WHEEL ADJUSTING SCREW**KLÖTZE TECHNIC NO.** ▶ KT43571**OEM. REF. NO.** SK 2905-51**BEŞİNCİ TEKER YEDEK PARÇA**
FIFTH WHEEL SPARE PART**KLÖTZE TECHNIC NO.** ▶ KT43572**OEM. REF. NO.** SK 2921-30**BEŞİNCİ TEKER ARAKOLU**
FIFTH WHEEL LEVER**KLÖTZE TECHNIC NO.** ▶ KT43573**OEM. REF. NO.** SK 2107-25**BEŞİNCİ TEKER YEDEK PARÇA**
FIFTH WHEEL SPARE PART**KLÖTZE TECHNIC NO.** ▶ KT43574**OEM. REF. NO.** SK 2921-02**BEŞİNCİ TEKER ÇEKME KOLU**
FIFTH WHEEL HANDLE**KLÖTZE TECHNIC NO.** ▶ KT43575**OEM. REF. NO.** SK 2905-111**BEŞİNCİ TEKER TAMİR TAKIMI 2"**
FIFTH WHEEL REPAIR KIT 2"**KLÖTZE TECHNIC NO.** ▶ KT43576**OEM. REF. NO.** SK 2921-031



FIFTH WHEEL 3,5''



KLÖTZE
TECHNIC

www.klotzetechnik.de



KT No. Replaces Ref. No: Description Model / Details

BEŞİNCİ TEKER 3.5"
 FIFTH WHEEL 3.5"



KLÖTZE TECHNIC NO. ▶ KT43577
OEM. REF. NO. JSK 38C1/C2

BEŞİNCİ TEKER 3.5"
 FIFTH WHEEL 3.5"



KLÖTZE TECHNIC NO. ▶ KT43578
OEM. REF. NO.

BEŞİNCİ TEKER KİLİT KANCA 3.5"
 FIFTH WHEEL LOCK JAW 3.5"



KLÖTZE TECHNIC NO. ▶ KT43579
OEM. REF. NO. SK 2405-14

BEŞİNCİ TEKER AŞINMA AYI 3.5"
 FIFTH WHEEL WEARING RING 3.5"



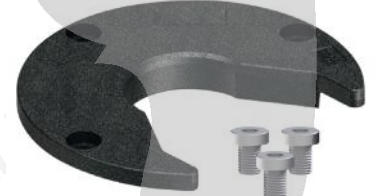
KLÖTZE TECHNIC NO. ▶ KT43580
OEM. REF. NO. SK 2421-56

BEŞİNCİ TEKER KİLİT KANCA 3.5"-2"
 FIFTH WHEEL LOCK JAW 3.5"-2"



KLÖTZE TECHNIC NO. ▶ KT43581
OEM. REF. NO. SK 2405-13

BEŞİNCİ TEKER AŞINMA AYI 3.5"-2"
 FIFTH WHEEL WEARING RING 3.5"-2"



KLÖTZE TECHNIC NO. ▶ KT43582
OEM. REF. NO. SK 2421-57

BEŞİNCİ TEKER KİLİT KANCA 3.5"
 FIFTH WHEEL LOCK JAW 3.5"



KLÖTZE TECHNIC NO. ▶ KT43583
OEM. REF. NO. SK 2405-14 Z

BEŞİNCİ TEKER KİLİT KANCA 3.5"-2"
 FIFTH WHEEL LOCK JAW 3.5"-2"



KLÖTZE TECHNIC NO. ▶ KT43584
OEM. REF. NO. SK 2405-13 Z

BEŞİNCİ TEKER KİLİTLEME KAMASI 3.5"
 FIFTH WHEEL LOCKING BOLT 3.5"



KLÖTZE TECHNIC NO. ▶ KT43585
OEM. REF. NO. SK 2405-01



KT No. Replaces Ref. No: Description Model / Details

BEŞİNCİ TEKER KAUCUK TAKOZ 3.5"
FIFTH WHEEL RUBBER PART (UPPER)



KLÖTZE TECHNIC NO. ▶ KT43586

OEM. REF. NO.

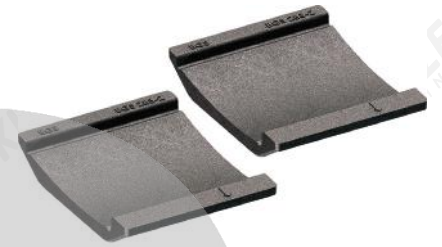
BEŞİNCİ TEKER KAUCUK TAKOZ 3.5" (ÜST)
FIFTH WHEEL RUBBER PART (UPPER)



KLÖTZE TECHNIC NO. ▶ KT43587

OEM. REF. NO. SK 2006

BEŞİNCİ TEKER KAUCUK TAKOZ 3.5" (ALT)
FIFTH WHEEL RUBBER PART (LOWER)



KLÖTZE TECHNIC NO. ▶ KT43588

OEM. REF. NO. SK 2007

BEŞİNCİ TEKER AYAK SABİTLEME CİVATASI
(M20*45)
FIFTH WHEEL COUNTERSUNK BOLT (M20*45)



KLÖTZE TECHNIC NO. ▶ KT43589

OEM. REF. NO. SK 2421-55

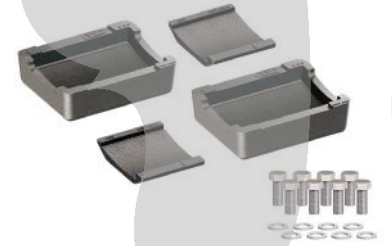
BEŞİNCİ TEKER AYAK SABİTLEME KEPİ
FIFTH WHEEL BRIDGE



KLÖTZE TECHNIC NO. ▶ KT43590

OEM. REF. NO. SK 2005

BEŞİNCİ TEKER TAMİR TAKIMI 3.5"
FIFTH WHEEL REPAIR KIT 3.5"



KLÖTZE TECHNIC NO. ▶ KT43591

OEM. REF. NO. SK 2421-78

BEŞİNCİ TEKER ÇEKME KOLU
FIFTH WHEEL HANDLE



KLÖTZE TECHNIC NO. ▶ KT43592

OEM. REF. NO. SK 2405-066

BEŞİNCİ TEKER ÇEKME KOLU
FIFTH WHEEL HANDLE



KLÖTZE TECHNIC NO. ▶ KT43593

OEM. REF. NO. SK 2405-067

BEŞİNCİ TEKER ARAKOLU
FIFTH WHEEL LEVER



KLÖTZE TECHNIC NO. ▶ KT43594

OEM. REF. NO. SK 2405-04



KT No. Replaces Ref. No: Description Model / Details

BEŞİNCİ TEKER ARAKOL SABİTLEME LAMASI
FIFTH WHEEL LEVER PART



KLÖTZE TECHNIC NO. ▶ KT43595

OEM. REF. NO. SK 2405-15

BEŞİNCİ TEKER AYAĞI H190
FIFTH WHEEL PEDESTAL H190



KLÖTZE TECHNIC NO. ▶ KT43596

OEM. REF. NO. SK 2404-01

BEŞİNCİ TEKER AŞINMA AYI CİVATASI
(M12*22)
FIFTH WHEEL WEARING RING BOLT (M12*22)



KLÖTZE TECHNIC NO. ▶ KT43597

OEM. REF. NO. SK 2421-08

BEŞİNCİ TEKER KİLİTLEME KAMA PİMİ
FIFTH WHEEL LOCKING BOLT PIN



KLÖTZE TECHNIC NO. ▶ KT43598

OEM. REF. NO. SK 2121-14

BEŞİNCİ TEKER KİLİTLEME KAMA SEKMANI
FIFTH WHEEL LOCKING BOLT PART



KLÖTZE TECHNIC NO. ▶ KT43599

OEM. REF. NO. SK 2405-19

BEŞİNCİ TEKER KİLİTLEME KAMASI GERĞİ YAYI
FIFTH WHEEL LOCKING BOLT SPARE PART



KLÖTZE TECHNIC NO. ▶ KT43600

OEM. REF. NO. SK 2405-09

BEŞİNCİ TEKER YEDEK PARÇA
FIFTH WHEEL SPARE PART



KLÖTZE TECHNIC NO. ▶ KT43601

OEM. REF. NO. SK 3521-02

BEŞİNCİ TEKER YEDEK PARÇA
FIFTH WHEEL SPARE PART



KLÖTZE TECHNIC NO. ▶ KT43602

OEM. REF. NO. SK 1436

BEŞİNCİ TEKER EMNİYET YAYI
FIFTH WHEEL TENSION SPRING



KLÖTZE TECHNIC NO. ▶ KT43603

OEM. REF. NO. SK 2405-23



KT No. Replaces Ref. No: Description Model / Details

BEŞİNCİ TEKER KİLİT KANCA PİMİ (Ø20)
FIFTH WHEEL LOCK JAW PIN (Ø20)



KLÖTZE TECHNIC NO. ▶ **KT43604**

OEM. REF. NO. SK 2405-18

BEŞİNCİ TEKER AYAR ÇİVATASI (M14*70)
FIFTH WHEEL ADJUSTING SCREW (M14*70)



KLÖTZE TECHNIC NO. ▶ **KT43605**

OEM. REF. NO. SK 2421-52

BEŞİNCİ TEKER ARAKOL SABİTLEME ÇİVATASI (M12*25)
FIFTH WHEEL LEVER PART (M12*25)



KLÖTZE TECHNIC NO. ▶ **KT43606**

OEM. REF. NO. SK 2421-53

BEŞİNCİ TEKER TOPUZU
FIFTH WHEEL LATCH



KLÖTZE TECHNIC NO. ▶ **KT43607**

OEM. REF. NO. SK 2405-27

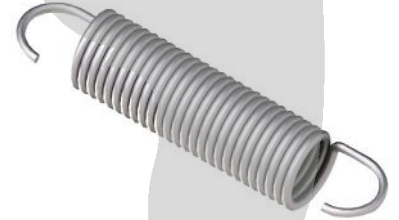
BEŞİNCİ TEKER TOPUZ SABİTLEME ÇİVATASI (M10*70)
FIFTH WHEEL LATCH MOUNTING BOLT (M10*70)



KLÖTZE TECHNIC NO. ▶ **KT43608**

OEM. REF. NO. SK 2421-51

BEŞİNCİ TEKER TOPUZ GERĞİ YAYI (Ø20)
FIFTH WHEEL LATCH SPRING (Ø20)



KLÖTZE TECHNIC NO. ▶ **KT43609**

OEM. REF. NO. SK 2106-01

BEŞİNCİ TEKER YEDEK PARÇA
FIFTH WHEEL SPARE PART



KLÖTZE TECHNIC NO. ▶ **KT43610**

OEM. REF. NO. SK 2405-084

KT No. Replaces Ref. No: Description Model / Details

BEŞİNCİ TEKER TAMİR TAKIMI 3.5"
 FIFTH WHEEL REPAIR KIT 3,5"



KLÖTZE TECHNIC NO. ▶ **KT43611**
OEM. REF. NO. SK 2421-99

BEŞİNCİ TEKER TAMİR TAKIMI 3.5"
 FIFTH WHEEL REPAIR KIT 3,5"



KLÖTZE TECHNIC NO. ▶ **KT43612**
OEM. REF. NO. SK 2421-99 Z

BEŞİNCİ TEKER TAMİR TAKIMI 3.5"
 FIFTH WHEEL REPAIR KIT 3,5"



KLÖTZE TECHNIC NO. ▶ **KT43613**
OEM. REF. NO.

BEŞİNCİ TEKER TAMİR TAKIMI 3.5"
 FIFTH WHEEL REPAIR KIT 3,5"



KLÖTZE TECHNIC NO. ▶ **KT43614**
OEM. REF. NO.

BEŞİNCİ TEKER TAMİR TAKIMI 3.5"
 FIFTH WHEEL REPAIR KIT 3,5"



KLÖTZE TECHNIC NO. ▶ **KT43615**
OEM. REF. NO.

BEŞİNCİ TEKER TAMİR TAKIMI 3.5"
 FIFTH WHEEL REPAIR KIT 3,5"



KLÖTZE TECHNIC NO. ▶ **KT43616**
OEM. REF. NO.

BEŞİNCİ TEKER TAMİR TAKIMI 3.5"
 FIFTH WHEEL REPAIR KIT 3,5"



KLÖTZE TECHNIC NO. ▶ **KT43617**
OEM. REF. NO.

BEŞİNCİ TEKER TAMİR TAKIMI 3.5"
 FIFTH WHEEL REPAIR KIT 3,5"



KLÖTZE TECHNIC NO. ▶ **KT43618**
OEM. REF. NO. SK 2421-76

BEŞİNCİ TEKER TAMİR TAKIMI 3.5"
 FIFTH WHEEL REPAIR KIT 3,5"



KLÖTZE TECHNIC NO. ▶ **KT43619**
OEM. REF. NO. SK 2421-76 Z



KT No. Replaces Ref. No: Description Model / Details

BEŞİNCİ TEKER TAMİR TAKIMI 3.5"-2"
 FIFTH WHEEL REPAIR KIT 3,5"-2"



KLÖTZE TECHNIC NO. ▶ **KT43620**

OEM. REF. NO. SK 2421-77

BEŞİNCİ TEKER TAMİR TAKIMI 3.5"-2"
 FIFTH WHEEL REPAIR KIT 3,5"-2"



KLÖTZE TECHNIC NO. ▶ **KT43621**

OEM. REF. NO. SK 2421-77 Z

BEŞİNCİ TEKER TAMİR TAKIMI 3.5"-2"
 FIFTH WHEEL REPAIR KIT 3,5"-2"



KLÖTZE TECHNIC NO. ▶ **KT43622**

OEM. REF. NO. SK 2421-98

BEŞİNCİ TEKER TAMİR TAKIMI 3.5"-2"
 FIFTH WHEEL REPAIR KIT 3,5"-2"



KLÖTZE TECHNIC NO. ▶ **KT43623**

OEM. REF. NO. SK 2421-98 Z

BEŞİNCİ TEKER TAMİR TAKIMI 3.5"-2"
 FIFTH WHEEL REPAIR KIT 3,5"-2"



KLÖTZE TECHNIC NO. ▶ **KT43624**

OEM. REF. NO.

BEŞİNCİ TEKER TAMİR TAKIMI 3.5"-2"
 FIFTH WHEEL REPAIR KIT 3,5"-2"



KLÖTZE TECHNIC NO. ▶ **KT43625**

OEM. REF. NO.

BEŞİNCİ TEKER TAMİR TAKIMI 3.5"-2"
 FIFTH WHEEL REPAIR KIT 3,5"-2"



KLÖTZE TECHNIC NO. ▶ **KT43626**

OEM. REF. NO.

BEŞİNCİ TEKER TAMİR TAKIMI 3.5"-2"
 FIFTH WHEEL REPAIR KIT 3,5"-2"



KLÖTZE TECHNIC NO. ▶ **KT43627**

OEM. REF. NO.

BEŞİNCİ TEKER TAMİR TAKIMI 3.5"-2"
 FIFTH WHEEL REPAIR KIT 3,5"-2"



KLÖTZE TECHNIC NO. ▶ **KT43628**

OEM. REF. NO.



FIFTH WHEEL 3,5" ARTICULATION



KLÖTZE
TECHNIC



www.klotzetechnik.de

KT No. Replaces Ref. No: Description Model / Details

BEŞİNCİ TEKER 3.5" MAFSALLI
 FIFTH WHEEL 3.5" ARTICULATION



KLÖTZE TECHNIC NO. ▶ KT43629

OEM. REF. NO. JSK 3861/G2

BEŞİNCİ TEKER KİLİT KANCA 3.5"
 FIFTH WHEEL LOCK JAW 3.5"



KLÖTZE TECHNIC NO. ▶ KT43630

OEM. REF. NO. SK 2405-14

BEŞİNCİ TEKER AŞINMA AYI 3.5"
 FIFTH WHEEL WEARING RING 3.5"



KLÖTZE TECHNIC NO. ▶ KT43631

OEM. REF. NO. SK 2421-56

BEŞİNCİ TEKER KİLİT KANCA 3.5"-2"
 FIFTH WHEEL LOCK JAW 3.5"-2"



KLÖTZE TECHNIC NO. ▶ KT43632

OEM. REF. NO. SK 2405-13

BEŞİNCİ TEKER AŞINMA AYI 3.5"-2"
 FIFTH WHEEL WEARING RING 3.5"-2"



KLÖTZE TECHNIC NO. ▶ KT43633

OEM. REF. NO. SK 2421-57

BEŞİNCİ TEKER KİLİTLEME KAMASI 3.5"
 FIFTH WHEEL LOCKING BOLT 3.5"



KLÖTZE TECHNIC NO. ▶ KT43634

OEM. REF. NO. SK 2405-01

BEŞİNCİ TEKER MAFSAL KÜTÜĞÜ
 FIFTH WHEEL 3.5" ARTICULATION PART



KLÖTZE TECHNIC NO. ▶ KT43635

OEM. REF. NO. SK 2521-51

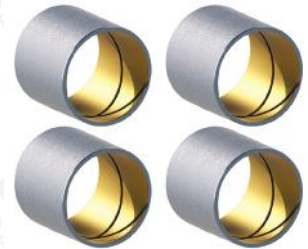
BEŞİNCİ TEKER MAFSALLI AYAĞI
 FIFTH WHEEL PEDESTAL



KLÖTZE TECHNIC NO. ▶ KT43636

OEM. REF. NO. SK 2521-52

BEŞİNCİ TEKER MAFSAL BURCU
 FIFTH WHEEL BUSHING



KLÖTZE TECHNIC NO. ▶ KT43637

OEM. REF. NO. SK 2504-16



KT No. Replaces Ref. No: Description Model / Details

BEŞİNCİ TEKER MAFSAL SABİTLEME PERNOSU
FIFTH WHEEL MOUNTING BOLT



KLÖTZE TECHNIC NO. ▶ KT43638

OEM. REF. NO. SK 2504-17

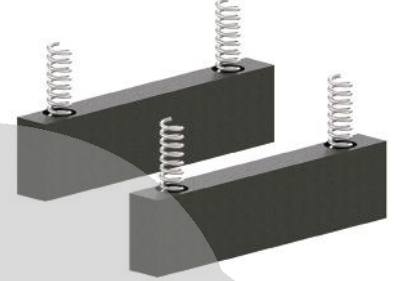
BEŞİNCİ TEKER MAFSAL SABİTLEYİCİ DÖKÜM
FIFTH WHEEL MOUNTING CASTING



KLÖTZE TECHNIC NO. ▶ KT43639

OEM. REF. NO. SK 2506-22

BEŞİNCİ TEKER MAFSAL DAYANAĞI
FIFTH WHEEL SPARE PART



KLÖTZE TECHNIC NO. ▶ KT43640

OEM. REF. NO. SK 2506-35

BEŞİNCİ TEKER MAFSAL SABİTLEME CİVATASI (M14*35)
FIFTH WHEEL SPARE PART (M14*35)



KLÖTZE TECHNIC NO. ▶ KT43641

OEM. REF. NO. SK 2521-18

BEŞİNCİ TEKER MAFSAL SABİTLEME CİVATA PULU (M20-M14)
FIFTH WHEEL SPARE PART (M20-M14)



KLÖTZE TECHNIC NO. ▶ KT43642

OEM. REF. NO. SK 2504-21

BEŞİNCİ TEKER MAFSAL DENGE PULU
FIFTH WHEEL SPARE PART



KLÖTZE TECHNIC NO. ▶ KT43643

OEM. REF. NO. SK 2504-14

BEŞİNCİ TEKER MAFSAL O'RİNG (Ø95)
FIFTH WHEEL SPARE PART (Ø95)



KLÖTZE TECHNIC NO. ▶ KT43644

OEM. REF. NO. SK 2521-07

BEŞİNCİ TEKER BURÇ SABİTLEME CİVATASI (M12*20)
FIFTH WHEEL SPARE PART (M12*20)



KLÖTZE TECHNIC NO. ▶ KT43645

OEM. REF. NO. SK 1533

BEŞİNCİ TEKER YAĞLAMA GRESÖRLÜĞÜ (M8*1)
FIFTH WHEEL SPARE PART (M8*1)



KLÖTZE TECHNIC NO. ▶ KT43646

OEM. REF. NO. SK 2521-04



KT No. Replaces Ref. No: Description Model / Details

BEŞİNCİ TEKER MAFSAL DENGE PULU
FIFTH WHEEL SPARE PART



KLÖTZE TECHNIC NO. ▶ KT43647

OEM. REF. NO. SK 1192-1

BEŞİNCİ TEKER AYAK SEKMANI
FIFTH WHEEL SPARE PART



KLÖTZE TECHNIC NO. ▶ KT43648

OEM. REF. NO. SK 1435

BEŞİNCİ TEKER MAFSAL SABİTLEME CİVATA PULU (M20)
FIFTH WHEELSPARE PART (M20)



KLÖTZE TECHNIC NO. ▶ KT43649

OEM. REF. NO. SK 2504-20

BEŞİNCİ TEKER YEDEK PARÇA
FIFTH WHEEL SPARE PART



KLÖTZE TECHNIC NO. ▶ KT43650

OEM. REF. NO. SK 2506-15

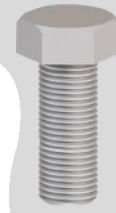
BEŞİNCİ TEKER MAFSAL SABİTLEME CİVATASI (M10*25)
FIFTH WHEEL SPARE PART (M10*25)



KLÖTZE TECHNIC NO. ▶ KT43651

OEM. REF. NO. SK 2521-50

BEŞİNCİ TEKER MAFSAL SABİTLEME CİVATASI
FIFTH WHEEL SPARE PART



KLÖTZE TECHNIC NO. ▶ KT43652

OEM. REF. NO. SK 2034

BEŞİNCİ TEKER MAFSAL SABİTLEME LAMASI
FIFTH WHEEL SPARE PART



KLÖTZE TECHNIC NO. ▶ KT43653

OEM. REF. NO. SK 2504-18

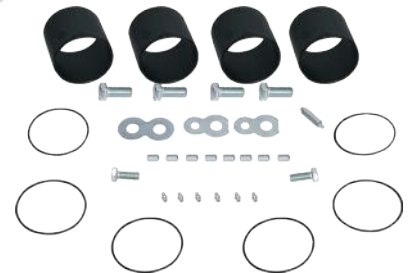
BEŞİNCİ TEKER MAFSAL SABİTLEME LAMASI
FIFTH WHEEL SPARE PART



KLÖTZE TECHNIC NO. ▶ KT43654

OEM. REF. NO. SK 2504-19

BEŞİNCİ TEKER TAMİR TAKIMI 3.5"
FIFTH WHEEL REPAIR KIT 3,5"



KLÖTZE TECHNIC NO. ▶ KT43655

OEM. REF. NO. SK 2521-76



FIFTH WHEEL 2''



KLÖTZE
TECHNIC

www.klotzetechnik.de





KT No. Replaces Ref. No: Description Model / Details

BEŞİNCİ TEKER KİLİT KANCA 2"
FIFTH WHEEL LOCK JAW 2"



KLÖTZE TECHNIC NO. ▶ KT43656

OEM. REF. NO. 662 129 134

BEŞİNCİ TEKER KİLİT KANCA 2"
FIFTH WHEEL LOCK JAW 2"



KLÖTZE TECHNIC NO. ▶ KT43657

OEM. REF. NO. 662 131 107

BEŞİNCİ TEKER AŞINMA AYI 2"
FIFTH WHEEL WEARING RING 2"



KLÖTZE TECHNIC NO. ▶ KT43658

OEM. REF. NO. 662 101 566

BEŞİNCİ TEKER AŞINMA AYI 2" (CİVATASIZ)
FIFTH WHEEL WEARING RING 2" (WITHOUT BOLT)



KLÖTZE TECHNIC NO. ▶ KT43659

OEM. REF. NO. 662 129 377

BEŞİNCİ TEKER AŞINMA AYI 2" (PLASTİK)
FIFTH WHEEL WEARING RING 2"



KLÖTZE TECHNIC NO. ▶ KT43660

OEM. REF. NO. 662 101 534

BEŞİNCİ TEKER AŞINMA AYI 2" (CİVATASIZ)
FIFTH WHEEL WEARING RING 2" (WITHOUT BOLT)



KLÖTZE TECHNIC NO. ▶ KT43662

OEM. REF. NO. 662 131 114

BEŞİNCİ TEKER AŞINMA AYI 2"
FIFTH WHEEL WEARING RING 2"



KLÖTZE TECHNIC NO. ▶ KT43663

OEM. REF. NO. 662 101 565

BEŞİNCİ TEKER AŞINMA AYI 2"
FIFTH WHEEL WEARING RING 2"



KLÖTZE TECHNIC NO. ▶ KT43664

OEM. REF. NO. 662 129 373

BEŞİNCİ TEKER KİLİTLEME KAMASI 2"
FIFTH WHEEL LOCKING BOLT 2"



KLÖTZE TECHNIC NO. ▶ KT43661

OEM. REF. NO. 662 129 381



KT No. Replaces Ref. No: Description Model / Details

BEŞİNCİ TEKER AŞINMA AYI CİVATASI
(M10*25)
FIFTH WHEEL WEARING RING BOLT (M10*25)



KLÖTZE TECHNIC NO. ▶ KT43665
OEM. REF. NO. 662 126 155

BEŞİNCİ TEKER KİLİT KANCA PİMİ
FIFTH WHEEL LOCK JAW PIN



KLÖTZE TECHNIC NO. ▶ KT43666
OEM. REF. NO. 662 129 375

BEŞİNCİ TEKER KİLİT KANCA YAYI
FIFTH WHEEL LOCK JAW SPRING



KLÖTZE TECHNIC NO. ▶ KT43667
OEM. REF. NO. 662 126 411

BEŞİNCİ TEKER TAMİR TAKIMI
FIFTH WHEEL REPAIR KIT



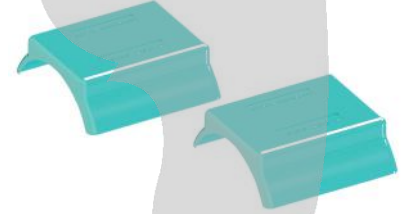
KLÖTZE TECHNIC NO. ▶ KT43668
OEM. REF. NO.

BEŞİNCİ TEKER KAUCUK TAKOZ
FIFTH WHEEL RUBBER PART



KLÖTZE TECHNIC NO. ▶ KT43669
OEM. REF. NO. 662 114 110

BEŞİNCİ TEKER PLASTİK TAKOZ
FIFTH WHEEL PLASTIC PART



KLÖTZE TECHNIC NO. ▶ KT43670
OEM. REF. NO. 662 130 101

BEŞİNCİ TEKER AYAK SABİTLEME CİVATASI (M20*80)
FIFTH WHEEL COUNTERSUNK BOLT (M20*80)



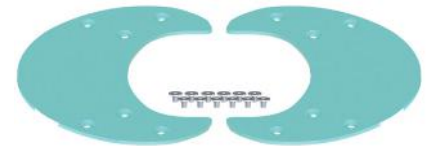
KLÖTZE TECHNIC NO. ▶ KT43671
OEM. REF. NO. 662 129 606

BEŞİNCİ TEKER AYAK SABİTLEME CİVATASI (M20*70)
FIFTH WHEEL COUNTERSUNK BOLT (M20*70)



KLÖTZE TECHNIC NO. ▶ KT43672
OEM. REF. NO. 659 112 365

BEŞİNCİ TEKER AŞINMA PLASTİĞİ
FIFTH WHEEL SLIDE PART

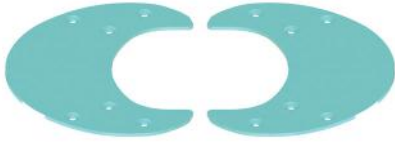


KLÖTZE TECHNIC NO. ▶ KT43673
OEM. REF. NO. 662 101 469



KT No. Replaces Ref. No: Description Model / Details

BEŞİNCİ TEKER AŞINMA PLASTİĞİ (CİVATASIZ)
FIFTH WHEEL SLIDE PART (WITHOUT BOLT)



KLÖTZE TECHNIC NO. ▶ **KT43674**

OEM. REF. NO. 662 131 103

BEŞİNCİ TEKER AŞINMA PLASTİĞİ CİVATASI
FIFTH WHEEL SLIDE PART BOLT



KLÖTZE TECHNIC NO. ▶ **KT43675**

OEM. REF. NO. 662 130 114

BEŞİNCİ TEKER KİLİTLEME KAMA CİVATASI (M20*40)
FIFTH WHEEL LOCKING BOLT (M20*40)



KLÖTZE TECHNIC NO. ▶ **KT43676**

OEM. REF. NO. 662 129 600

BEŞİNCİ TEKER KİLİT KANCA SEKMANI
FIFTH WHEEL LOCK JAW PART



KLÖTZE TECHNIC NO. ▶ **KT43677**

OEM. REF. NO. 659 100 027

BEŞİNCİ TEKER KİLİT KANCA PULU
FIFTH WHEEL LOCK JAW PART



KLÖTZE TECHNIC NO. ▶ **KT43678**

OEM. REF. NO. 659 100 026

BEŞİNCİ TEKER AYAĞI H220
FIFTH WHEEL PEDESTAL H220



KLÖTZE TECHNIC NO. ▶ **KT43679**

OEM. REF. NO.

BEŞİNCİ TEKER YÜKSELTME TAKOZU H50
FIFTH WHEEL RAISING WEDGE H50



KLÖTZE TECHNIC NO. ▶ **KT43680**

OEM. REF. NO.

BEŞİNCİ TEKER YÜKSELTME TAKOZU H40
FIFTH WHEEL RAISING WEDGE H40



KLÖTZE TECHNIC NO. ▶ **KT43681**

OEM. REF. NO.

BEŞİNCİ TEKER YÜKSELTME TAKOZU H30
FIFTH WHEEL RAISING WEDGE H30



KLÖTZE TECHNIC NO. ▶ **KT43682**

OEM. REF. NO.

KT No. Replaces Ref. No: Description Model / Details

BEŞİNCİ TEKER TAMİR TAKIMI 2"
 FIFTH WHEEL REPAIR KIT 2"



KLÖTZE TECHNIC NO. ▶ **KT43683**

OEM. REF. NO. 662 101 492

BEŞİNCİ TEKER TAMİR TAKIMI 2"
 FIFTH WHEEL REPAIR KIT 2"



KLÖTZE TECHNIC NO. ▶ **KT43684**

OEM. REF. NO. 662 101 517

BEŞİNCİ TEKER TAMİR TAKIMI 2"
 FIFTH WHEEL REPAIR KIT 2"



KLÖTZE TECHNIC NO. ▶ **KT43685**

OEM. REF. NO. 662 101 475

BEŞİNCİ TEKER TAMİR TAKIMI 2"
 FIFTH WHEEL REPAIR KIT 2"



KLÖTZE TECHNIC NO. ▶ **KT43686**

OEM. REF. NO. 662 101 493

BEŞİNCİ TEKER TAMİR TAKIMI 2"
 FIFTH WHEEL REPAIR KIT 2"



KLÖTZE TECHNIC NO. ▶ **KT43687**

OEM. REF. NO.

BEŞİNCİ TEKER TAMİR TAKIMI 2"
 FIFTH WHEEL REPAIR KIT 2"



KLÖTZE TECHNIC NO. ▶ **KT43688**

OEM. REF. NO. 662 101 516

BEŞİNCİ TEKER TAMİR TAKIMI 2"
 FIFTH WHEEL REPAIR KIT 2"



KLÖTZE TECHNIC NO. ▶ **KT43689**

OEM. REF. NO. 662 101 477

BEŞİNCİ TEKER TAMİR TAKIMI 2"
 FIFTH WHEEL REPAIR KIT 2"



KLÖTZE TECHNIC NO. ▶ **KT43690**

OEM. REF. NO.

BEŞİNCİ TEKER TAMİR TAKIMI 2"
 FIFTH WHEEL REPAIR KIT 2"



KLÖTZE TECHNIC NO. ▶ **KT43691**

OEM. REF. NO. 662 101 473



KT No. **Replaces Ref. No:** **Description** **Model / Details**

BEŞİNCİ TEKER TAMİR TAKIMI 2"
FIFTH WHEEL REPAIR KIT 2"



KLÖTZE TECHNIC NO. ▶ **KT43692**

OEM. REF. NO. 662 101 518

BEŞİNCİ TEKER TAMİR TAKIMI 2"
FIFTH WHEEL REPAIR KIT 2"



KLÖTZE TECHNIC NO. ▶ **KT43693**

OEM. REF. NO. 662 101 449

BEŞİNCİ TEKER TAMİR TAKIMI 2"
FIFTH WHEEL REPAIR KIT 2"



KLÖTZE TECHNIC NO. ▶ **KT43694**

OEM. REF. NO. 662 101 415



KT No. **Replaces Ref. No:** **Description** **Model / Details**

BEŞİNCİ TEKER TAMİR TAKIMI 2"
FIFTH WHEEL REPAIR KIT 2"



KLÖTZE TECHNIC NO. ▶ **KT43695**

OEM. REF. NO. 662 133 492

BEŞİNCİ TEKER TAMİR TAKIMI 2"
FIFTH WHEEL REPAIR KIT 2"



KLÖTZE TECHNIC NO. ▶ **KT43696**

OEM. REF. NO. SK 2121-53

BEŞİNCİ TEKER AŞINMA AYI 2"
FIFTH WHEEL WEARING RING 2"



KLÖTZE TECHNIC NO. ▶ **KT43697**

OEM. REF. NO. 662 133 566



FIFTH WHEEL 2''



KLÖTZE
TECHNIC

www.klotzetechnik.de



KT No. Replaces Ref. No: Description Model / Details

BEŞİNCİ TEKER KİLİT KANCA 2"
 662 126 403



KLÖTZE TECHNIC NO. ▶ KT43698
OEM. REF. NO. 662 126 403

BEŞİNCİ TEKER KİLİT KANCA 2"
 FIFTH WHEEL LOCK JAW 2"



KLÖTZE TECHNIC NO. ▶ KT43699
OEM. REF. NO. 662 130 104

BEŞİNCİ TEKER KİLİT KANCA 2"
 FIFTH WHEEL LOCK JAW 2"



KLÖTZE TECHNIC NO. ▶ KT43700
OEM. REF. NO. 662 126 401

BEŞİNCİ TEKER AŞINMA AYI 2"
 FIFTH WHEEL WEARING RING 2"



KLÖTZE TECHNIC NO. ▶ KT43701
OEM. REF. NO. 662 101 338

BEŞİNCİ TEKER AŞINMA AYI 2"
 FIFTH WHEEL WEARING RING 2"



KLÖTZE TECHNIC NO. ▶ KT43702
OEM. REF. NO. 662 101 562

BEŞİNCİ TEKER AŞINMA AYI 2"
 FIFTH WHEEL WEARING RING 2"



KLÖTZE TECHNIC NO. ▶ KT43703
OEM. REF. NO. 662 101 494

BEŞİNCİ TEKER AŞINMA AYI 2"
 FIFTH WHEEL WEARING RING 2" RIGHT



KLÖTZE TECHNIC NO. ▶ KT43704
OEM. REF. NO. 662 130 123

BEŞİNCİ TEKER AŞINMA AYI 2"
 FIFTH WHEEL WEARING RING 2" LEFT



KLÖTZE TECHNIC NO. ▶ KT43705
OEM. REF. NO. 662 130 123

BEŞİNCİ TEKER AŞINMA AYI 2" (CİVATASIZ)
 FIFTH WHEEL WEARING RING 2" (WITHOUT BOLT)



KLÖTZE TECHNIC NO. ▶ KT43706
OEM. REF. NO. 662 126 229



KT No. Replaces Ref. No: Description Model / Details

BEŞİNCİ TEKER AŞINMA AYI 2" (CİVATASIZ)
 FIFTH WHEEL WEARING RING 2" (WITHOUT BOLT)



KLÖTZE TECHNIC NO. ▶ KT43706

OEM. REF. NO. 662 126 202

BEŞİNCİ TEKER TAMİR TAKIMI 2"
 FIFTH WHEEL REPAIR KIT 2"



KLÖTZE TECHNIC NO. ▶ KT43707

OEM. REF. NO.

BEŞİNCİ TEKER PLASTİK TAKOZ
 FIFTH WHEEL PLASTIC PART



KLÖTZE TECHNIC NO. ▶ KT43708

OEM. REF. NO. 662 126 633

BEŞİNCİ TEKER TAMİR TAKIMI 2"
 FIFTH WHEEL REPAIR KIT 2"



KLÖTZE TECHNIC NO. ▶ KT43709

OEM. REF. NO. 662 101 334

BEŞİNCİ TEKER TAMİR TAKIMI 2"
 FIFTH WHEEL REPAIR KIT 2"



KLÖTZE TECHNIC NO. ▶ KT43710

OEM. REF. NO. 662 101 315

BEŞİNCİ TEKER PLASTİK TAKOZ
 FIFTH WHEEL PLASTIC PART



KLÖTZE TECHNIC NO. ▶ KT43711

OEM. REF. NO. 662 126 600

BEŞİNCİ TEKER KAUKÇUK TAKOZ
 FIFTH WHEEL RUBBER PART



KLÖTZE TECHNIC NO. ▶ KT43712

OEM. REF. NO. 662 126 608

BEŞİNCİ TEKER TAMİR TAKIMI 2"
 FIFTH WHEEL REPAIR KIT 2"



KLÖTZE TECHNIC NO. ▶ KT43713

OEM. REF. NO. 662 101 388

BEŞİNCİ TEKER PLASTİK TAKOZ
 FIFTH WHEEL PLASTIC PART

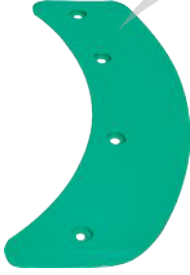


KLÖTZE TECHNIC NO. ▶ KT43714

OEM. REF. NO. 662 125 146



KT No. Replaces Ref. No: Description Model / Details

BEŞİNCİ TEKER TAMİR TAKIMI 2"
FIFTH WHEEL REPAIR KIT 2"**KLÖTZE TECHNIC NO.** ▶ KT43715**OEM. REF. NO.** 662 101 383**BEŞİNCİ TEKER AŞINMA PLASTİĞİ**
FIFTH WHEEL SLIDE PART**KLÖTZE TECHNIC NO.** ▶ KT43716**OEM. REF. NO.** 662 101 450**BEŞİNCİ TEKER AŞINMA PLASTİĞİ SOL**
FIFTH WHEEL SLIDE PART (LEFT)**KLÖTZE TECHNIC NO.** ▶ KT43717**OEM. REF. NO.** 662 130 112**BEŞİNCİ TEKER AŞINMA PLASTİĞİ SAĞ**
FIFTH WHEEL SLIDE PART (RIGHT)**KLÖTZE TECHNIC NO.** ▶ KT43718**OEM. REF. NO.** 662 130 111**BEŞİNCİ TEKER KİLİT KANCA PİMİ**
FIFTH WHEEL LOCK JAW PIN**KLÖTZE TECHNIC NO.** ▶ KT43719**OEM. REF. NO.** 662 126 409**BEŞİNCİ TEKER KİLİT KANCA PİMİ**
FIFTH WHEEL LOCK JAW PIN**KLÖTZE TECHNIC NO.** ▶ KT43720**OEM. REF. NO.** 662 126 433**BEŞİNCİ TEKER KİLİT KANCA PİMİ**
FIFTH WHEEL LOCK JAW PIN**KLÖTZE TECHNIC NO.** ▶ KT43721**OEM. REF. NO.** 662 126 441**BEŞİNCİ TEKER KİLİT KANCA PİMİ**
FIFTH WHEEL LOCK JAW PIN**KLÖTZE TECHNIC NO.** ▶ KT43722**OEM. REF. NO.** 662 126 472**BEŞİNCİ TEKER AYAK SABİTLEME CİVATASI (M20*80)**
FIFTH WHEEL COUNTERSUNK BOLT (M20*80)**KLÖTZE TECHNIC NO.** ▶ KT43724**OEM. REF. NO.** 662 125 171



KT No. **Replaces Ref. No:** **Description** **Model / Details**

BEŞİNCİ TEKER TAMİR TAKIMI 2"
 FIFTH WHEEL REPAIR KIT 2"



KLÖTZE TECHNIC NO. ▶ **KT43725**

OEM. REF. NO. 662 101 313

BEŞİNCİ TEKER TAMİR TAKIMI 2"
 FIFTH WHEEL REPAIR KIT 2"



KLÖTZE TECHNIC NO. ▶ **KT43726**

OEM. REF. NO. 662 101 368

BEŞİNCİ TEKER TAMİR TAKIMI 2"
 FIFTH WHEEL REPAIR KIT 2"



KLÖTZE TECHNIC NO. ▶ **KT43727**

OEM. REF. NO. 662 101 332

BEŞİNCİ TEKER TAMİR TAKIMI 2"
 FIFTH WHEEL REPAIR KIT 2"



KLÖTZE TECHNIC NO. ▶ **KT43728**

OEM. REF. NO. 662 101 422

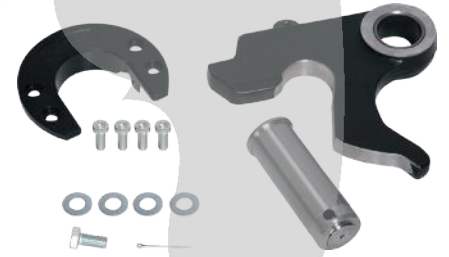
BEŞİNCİ TEKER TAMİR TAKIMI 2"
 FIFTH WHEEL REPAIR KIT 2"



KLÖTZE TECHNIC NO. ▶ **KT43729**

OEM. REF. NO. 662 101 314

BEŞİNCİ TEKER TAMİR TAKIMI 2"
 FIFTH WHEEL REPAIR KIT 2"



KLÖTZE TECHNIC NO. ▶ **KT43730**

OEM. REF. NO. 662 101 367

BEŞİNCİ TEKER TAMİR TAKIMI 2"
 FIFTH WHEEL REPAIR KIT 2"



KLÖTZE TECHNIC NO. ▶ **KT43731**

OEM. REF. NO. 662 101 333

BEŞİNCİ TEKER TAMİR TAKIMI 2"
 FIFTH WHEEL REPAIR KIT 2"



KLÖTZE TECHNIC NO. ▶ **KT43732**

OEM. REF. NO. 662 101 385

BEŞİNCİ TEKER TAMİR TAKIMI 2"
 FIFTH WHEEL REPAIR KIT 2"



KLÖTZE TECHNIC NO. ▶ **KT43733**

OEM. REF. NO. 662 101 423



KT No. **Replaces Ref. No:** **Description** **Model / Details**

BEŞİNCİ TEKER TAMİR TAKIMI 2"
 FIFTH WHEEL REPAIR KIT 2"



KLÖTZE TECHNIC NO. ▶ **KT43734**

OEM. REF. NO. 662 101 414

BEŞİNCİ TEKER TAMİR TAKIMI 2"
 FIFTH WHEEL REPAIR KIT 2"



KLÖTZE TECHNIC NO. ▶ **KT43735**

OEM. REF. NO. 662 101 447

BEŞİNCİ TEKER TAMİR TAKIMI 2"
 FIFTH WHEEL REPAIR KIT 2"



KLÖTZE TECHNIC NO. ▶ **KT43736**

OEM. REF. NO. 662 101 448

BEŞİNCİ TEKER TAMİR TAKIMI 2"
 FIFTH WHEEL REPAIR KIT 2"



KLÖTZE TECHNIC NO. ▶ **KT43737**

OEM. REF. NO. 662 101 386

BEŞİNCİ TEKER TAMİR TAKIMI 2"
 FIFTH WHEEL REPAIR KIT 2"



KLÖTZE TECHNIC NO. ▶ **KT43738**

OEM. REF. NO. 662 101 384

BEŞİNCİ TEKER TAMİR TAKIMI 2"
 FIFTH WHEEL REPAIR KIT 2"



KLÖTZE TECHNIC NO. ▶ **KT43739**

OEM. REF. NO. 662 101 381

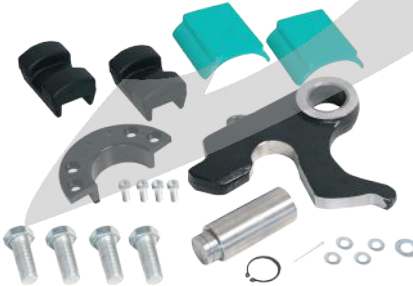
BEŞİNCİ TEKER TAMİR TAKIMI 2"
 FIFTH WHEEL REPAIR KIT 2"



KLÖTZE TECHNIC NO. ▶ **KT43740**

OEM. REF. NO. 662 101 416

BEŞİNCİ TEKER TAMİR TAKIMI 2"
 FIFTH WHEEL REPAIR KIT 2"



KLÖTZE TECHNIC NO. ▶ **KT43741**

OEM. REF. NO. 662 101 474

FIFTH WHEEL 2''



KLÖTZE
TECHNIC

www.klotzetechnik.de



KT No. Replaces Ref. No: Description Model / Details

BEŞİNCİ TEKER KİLİT KANCA 3.5"
 FIFTH WHEEL LOCK JAW 3.5"



KLÖTZE TECHNIC NO. ▶ KT43742

OEM. REF. NO. 662 111 247

BEŞİNCİ TEKER AŞINMA AYI 3.5"
 FIFTH WHEEL WEARING RING 3.5"



KLÖTZE TECHNIC NO. ▶ KT43743

OEM. REF. NO. 662 101 711

BEŞİNCİ TEKER AŞINMA AYI 3.5"
 FIFTH WHEEL WEARING RING 3.5"



KLÖTZE TECHNIC NO. ▶ KT43744

OEM. REF. NO. 662 111 343

BEŞİNCİ TEKER AŞINMA AYI 3.5"
 FIFTH WHEEL WEARING RING 3.5"



KLÖTZE TECHNIC NO. ▶ KT43745

OEM. REF. NO. 662 101 564

BEŞİNCİ TEKER AŞINMA AYI 3.5"
 FIFTH WHEEL WEARING RING 3.5"



KLÖTZE TECHNIC NO. ▶ KT43746

OEM. REF. NO. 662 111 250

BEŞİNCİ TEKER KİLİT KANCA 3.5"-2"
 FIFTH WHEEL LOCK JAW 3.5"-2"



KLÖTZE TECHNIC NO. ▶ KT43747

OEM. REF. NO. 662 111 249

BEŞİNCİ TEKER TAMİR TAKIMI 3,5"
 FIFTH WHEEL REPAIR KIT 3,5"



KLÖTZE TECHNIC NO. ▶ KT43748

OEM. REF. NO. 662 101 710

BEŞİNCİ TEKER AŞINMA AYI 3.5"-2"
 FIFTH WHEEL WEARING RING 3.5"-2"



KLÖTZE TECHNIC NO. ▶ KT43749

OEM. REF. NO. 662 111 342

BEŞİNCİ TEKER AŞINMA AYI 3.5"-2"
 FIFTH WHEEL WEARING RING 3.5"-2"



KLÖTZE TECHNIC NO. ▶ KT43750

OEM. REF. NO. 662 101 563



KT No. Replaces Ref. No: Description Model / Details

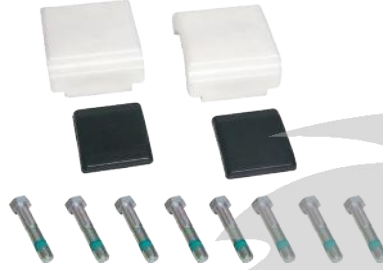
BEŞİNCİ TEKER AŞINMA AYI 3.5"-2"
 FIFTH WHEEL WEARING RING 3.5"-2"



KLÖTZE TECHNIC NO. ▶ KT43751

OEM. REF. NO. 662 111 319

BEŞİNCİ TEKER TAMİR TAKIMI 3,5"
 FIFTH WHEEL REPAIR KIT 3,5"



KLÖTZE TECHNIC NO. ▶ KT43752

OEM. REF. NO. 662 101 457

BEŞİNCİ TEKER PLASTİK TAKOZ 3.5" (ÜST)
 FIFTH WHEEL COLLAR (UPPER)



KLÖTZE TECHNIC NO. ▶ KT43753

OEM. REF. NO. 662 111 264

BEŞİNCİ TEKER KAÜÇUK TAKOZ 3.5" (ALT)
 FIFTH WHEEL RUBBER PART (LOWER)



KLÖTZE TECHNIC NO. ▶ KT43754

OEM. REF. NO. 662 111 259

BEŞİNCİ TEKER TAMİR TAKIMI 3,5"
 FIFTH WHEEL REPAIR KIT 3,5"



KLÖTZE TECHNIC NO. ▶ KT43756

OEM. REF. NO. 662 101 707

BEŞİNCİ TEKER TAMİR TAKIMI 3,5"
 FIFTH WHEEL REPAIR KIT 3,5"



KLÖTZE TECHNIC NO. ▶ KT43757

OEM. REF. NO. 662 101 709

BEŞİNCİ TEKER TAMİR TAKIMI 3,5"
 FIFTH WHEEL REPAIR KIT 3,5"



KLÖTZE TECHNIC NO. ▶ KT43758

OEM. REF. NO. 662 101 705

BEŞİNCİ TEKER TAMİR TAKIMI 3.5"-2"
 FIFTH WHEEL REPAIR KIT 3.5"-2"



KLÖTZE TECHNIC NO. ▶ KT43759

OEM. REF. NO. 662 101 706

BEŞİNCİ TEKER TAMİR TAKIMI 3.5"-2"
 FIFTH WHEEL REPAIR KIT 3.5"-2"



KLÖTZE TECHNIC NO. ▶ KT43760

OEM. REF. NO. 662 101 708



KT No. **Replaces Ref. No:** **Description** **Model / Details**

BEŞİNCİ TEKER TAMİR TAKIMI 3,5"-2"
 FIFTH WHEEL REPAIR KIT 3,5"-2"



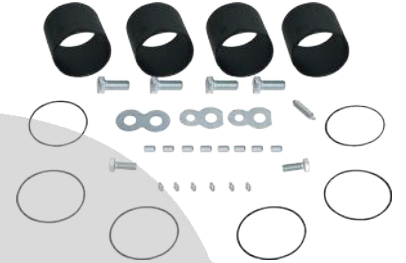
KLÖTZE TECHNIC NO. ▶ **KT43762**
OEM. REF. NO. 662 101 704

BEŞİNCİ TEKER KİLİT KANCA PİMİ
 FIFTH WHEEL LOCK JAW PIN



KLÖTZE TECHNIC NO. ▶ **KT43763**
OEM. REF. NO. 662 111 344

BEŞİNCİ TEKER TAMİR TAKIMI 3,5"
 FIFTH WHEEL REPAIR KIT 3,5"



KLÖTZE TECHNIC NO. ▶ **KT43764**
OEM. REF. NO. 662 101 487

BEŞİNCİ TEKER TAMİR TAKIMI 3,5"
 FIFTH WHEEL REPAIR KIT 3,5"



KLÖTZE TECHNIC NO. ▶ **KT43761**
OEM. REF. NO. 662 101 454

BEŞİNCİ TEKER TAMİR TAKIMI 3,5"
 FIFTH WHEEL REPAIR KIT 3,5"



KLÖTZE TECHNIC NO. ▶ **KT43765**
OEM. REF. NO. 662 101 456

BEŞİNCİ TEKER TAMİR TAKIMI 3,5"
 FIFTH WHEEL REPAIR KIT 3,5"



KLÖTZE TECHNIC NO. ▶ **KT43766**
OEM. REF. NO. 662 101 432

BEŞİNCİ TEKER TAMİR TAKIMI 3,5"-2"
 FIFTH WHEEL REPAIR KIT 3,5"-2"



KLÖTZE TECHNIC NO. ▶ **KT43767**
OEM. REF. NO. 662 101 453

BEŞİNCİ TEKER TAMİR TAKIMI 3,5"-2"
 FIFTH WHEEL REPAIR KIT 3,5"-2"



KLÖTZE TECHNIC NO. ▶ **KT43768**
OEM. REF. NO. 662 101 455

BEŞİNCİ TEKER TAMİR TAKIMI 3,5"-2"
 FIFTH WHEEL REPAIR KIT 3,5"-2"



KLÖTZE TECHNIC NO. ▶ **KT43769**
OEM. REF. NO. 662 101 431



KT No. **Replaces Ref. No:** **Description** **Model / Details**

**BEŞİNCİ TEKER AŞINMA AYI CİVATASI
(M12*14)**
FIFTH WHEEL WEARING RING BOLT (M12*14)



**BEŞİNCİ TEKER AYAK SABİTLEME CİVATASI
(M20*100)**
FIFTH WHEEL COUNTERSUNK BOLT (M20*100)



KLÖTZE TECHNIC NO. ▶ **KT43770**

OEM. REF. NO. 659 112 624

KLÖTZE TECHNIC NO. ▶ **KT43771**

OEM. REF. NO. 659 112 510





FIFTH WHEEL 2''



KLÖTZE
TECHNIC

www.klotzetechnik.de





KT No. **Replaces Ref. No:** **Description** **Model / Details**

BEŞİNCİ TEKER TAMİR TAKIMI 2"
 FIFTH WHEEL REPAIR KIT 2"



KLÖTZE TECHNIC NO. ▶ **KT43772**

OEM. REF. NO. **RK63503**

BEŞİNCİ TEKER KİLİT KANCA 2" SOL
 FIFTH WHEEL LOCK JAW 2" LEFT



KLÖTZE TECHNIC NO. ▶ **KT43773**

OEM. REF. NO.

BEŞİNCİ TEKER KİLİT KANCA 2" SAĞ
 FIFTH WHEEL LOCK JAW 2" RIGHT



KLÖTZE TECHNIC NO. ▶ **KT43774**

OEM. REF. NO.

BEŞİNCİ TEKER TAMİR TAKIMI 2"
 FIFTH WHEEL REPAIR KIT 2"



KLÖTZE TECHNIC NO. ▶ **KT43775**

OEM. REF. NO. **RS91103**

BEŞİNCİ TEKER KİLİT KANCA 2" SOL
 FIFTH WHEEL LOCK JAW 2" LEFT



KLÖTZE TECHNIC NO. ▶ **KT43776**

OEM. REF. NO.

BEŞİNCİ TEKER KİLİT KANCA 2" SAĞ
 FIFTH WHEEL LOCK JAW 2" RIGHT



KLÖTZE TECHNIC NO. ▶ **KT43777**

OEM. REF. NO.

BEŞİNCİ TEKER TAMİR TAKIMI 2"
 FIFTH WHEEL REPAIR KIT 2"



KLÖTZE TECHNIC NO. ▶ **KT43778**

OEM. REF. NO. **RS91114**

BEŞİNCİ TEKER KİLİT KANCA 2" SOL
 FIFTH WHEEL LOCK JAW 2" LEFT



KLÖTZE TECHNIC NO. ▶ **KT43779**

OEM. REF. NO.

BEŞİNCİ TEKER KİLİT KANCA 2" SAĞ
 FIFTH WHEEL LOCK JAW 2" RIGHT



KLÖTZE TECHNIC NO. ▶ **KT43780**

OEM. REF. NO.



KT No. Replaces Ref. No: Description Model / Details

BEŞİNCİ TEKER TAMİR TAKIMI 2"
FIFTH WHEEL REPAIR KIT 2"



KLÖTZE TECHNIC NO. ▶ KT43781

OEM. REF. NO. RK3510-TR2

BEŞİNCİ TEKER TAMİR TAKIMI 2"
FIFTH WHEEL REPAIR KIT 2"



KLÖTZE TECHNIC NO. ▶ KT43782

OEM. REF. NO. RS91086-1

BEŞİNCİ TEKER TAMİR TAKIMI 2"
FIFTH WHEEL REPAIR KIT 2"



KLÖTZE TECHNIC NO. ▶ KT43783

OEM. REF. NO. RS91086

BEŞİNCİ TEKER PLASTİK TAKOZ
FIFTH WHEEL PLASTIC PART



KLÖTZE TECHNIC NO. ▶ KT43784

OEM. REF. NO.

BEŞİNCİ TEKER KAÜÇUK TAKOZ
FIFTH WHEEL RUBBER PART



KLÖTZE TECHNIC NO. ▶ KT43785

OEM. REF. NO.

BEŞİNCİ TEKER SABİTLEME PİMİ
FIFTH WHEEL MOUNTING PIN



KLÖTZE TECHNIC NO. ▶ KT43786

OEM. REF. NO. XE-06356-KTL

TRAILER SPARE PARTS



KLÖTZE
TECHNIC

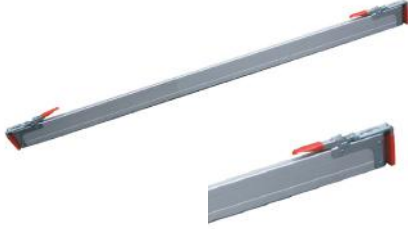
www.klotzetechnik.de





KT No. Replaces Ref. No: Description Model / Details

KARGO TUTUCU TENTELİ
CARGO HOLDER (TENT)



KLÖTZE TECHNIC NO. ▶ KT43787

OEM. REF. NO.

KARGO TUTUCU FRİĞO
CARGO HOLDER (FRİĞO)



KLÖTZE TECHNIC NO. ▶ KT43788

OEM. REF. NO.

MAPA-RORO HALKASI
TRAILER SPARE PART



KLÖTZE TECHNIC NO. ▶ KT43789

OEM. REF. NO.

MAPA-RORO HALKASI
TRAILER SPARE PART



KLÖTZE TECHNIC NO. ▶ KT43790

OEM. REF. NO.

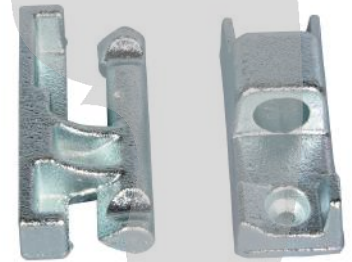
MAPA-RORO HALKASI
TRAILER SPARE PART



KLÖTZE TECHNIC NO. ▶ KT43791

OEM. REF. NO.

DORSE KAPAK MENTEŞESİ
TRAILER COVER PART



KLÖTZE TECHNIC NO. ▶ KT43792

OEM. REF. NO.

KROM KAPAK KİLİDİ
CHROME COVER LOCK



KLÖTZE TECHNIC NO. ▶ KT43793

OEM. REF. NO.

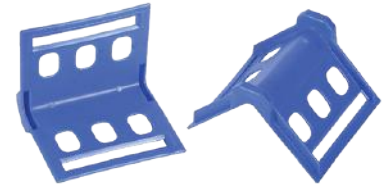
STEPNE TAŞIYICI
WHEEL CARRIER



KLÖTZE TECHNIC NO. ▶ KT43794

OEM. REF. NO.

SPANZET KÖŞEBENDİ
SPANSET BRACKET



KLÖTZE TECHNIC NO. ▶ KT43795

OEM. REF. NO.



KT No. Replaces Ref. No: Description Model / Details

ÇAMURLUK TEK TEKER
MUDGUARDS



KLÖTZE TECHNIC NO. ▶ KT43796

OEM. REF. NO.

ÇAMURLUK ÇİFT TEKER
MUDGUARDS



KLÖTZE TECHNIC NO. ▶ KT43797

OEM. REF. NO.

ÇAMURLUK ÇİFT TEKER ÜSTÜ DÜZ
MUDGUARDS



KLÖTZE TECHNIC NO. ▶ KT43798

OEM. REF. NO.

ÇAMURLUK DORSE YARIM
MUDGUARDS



KLÖTZE TECHNIC NO. ▶ KT43799

OEM. REF. NO.

ÇAMURLUK KELEPÇESİ 42 MM
MUDGUARD CLAMP - 42MM



KLÖTZE TECHNIC NO. ▶ KT43800

OEM. REF. NO.

ÇAMURLUK KELEPÇESİ 42MM PLASTİK
MUDGUARD CLAMP - PLASTIC



KLÖTZE TECHNIC NO. ▶ KT43801

OEM. REF. NO.

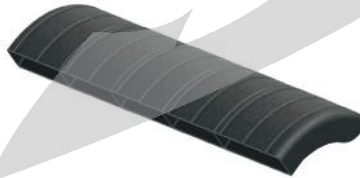
BİSİKLETLİK BARİYERİ 10 CM
TRAILER SPARE PART



KLÖTZE TECHNIC NO. ▶ KT43802

OEM. REF. NO.

BİSİKLETLİK BARİYERİ 50 CM
TRAILER SPARE PART



KLÖTZE TECHNIC NO. ▶ KT43803

OEM. REF. NO.

DAYAMA TAKOZU TEKLİ
RUBBER BUFFER



KLÖTZE TECHNIC NO. ▶ KT43804

OEM. REF. NO.

KT No. **Replaces Ref. No:** **Description** **Model / Details**

DAYAMA TAKOZU 520*110*80 MM
 RUBBER BUFFER



KLÖTZE TECHNIC NO. ▶ **KT43805**

OEM. REF. NO.

DAYAMA TAKOZU 570*70*100 MM
 RUBBER BUFFER



KLÖTZE TECHNIC NO. ▶ **KT43806**

OEM. REF. NO.

DAYAMA TAKOZU 290*100*74 MM
 RUBBER BUFFER



KLÖTZE TECHNIC NO. ▶ **KT43807**

OEM. REF. NO.

DAYAMA TAKOZU 235*51*57 MM
 RUBBER BUFFER



KLÖTZE TECHNIC NO. ▶ **KT43808**

OEM. REF. NO.

DAYAMA TAKOZU 167*120*75 MM
 RUBBER BUFFER



KLÖTZE TECHNIC NO. ▶ **KT43809**

OEM. REF. NO.

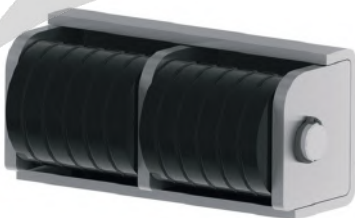
DAYAMA TAKOZU 200*100*67 MM
 RUBBER BUFFER



KLÖTZE TECHNIC NO. ▶ **KT43810**

OEM. REF. NO.

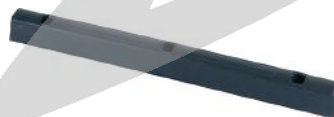
DAYAMA TAKOZU ÇİFTLİ
 RUBBER BUFFER



KLÖTZE TECHNIC NO. ▶ **KT43811**

OEM. REF. NO.

DAYAMA TAKOZU 500*40*41 MM
 RUBBER BUFFER



KLÖTZE TECHNIC NO. ▶ **KT43812**

OEM. REF. NO.

DAYAMA TAKOZU 3LÜ
 RUBBER BUFFER



KLÖTZE TECHNIC NO. ▶ **KT43813**

OEM. REF. NO.

FIFTH WHEEL AND REPAIR KITS



KLÖTZE
TECHNIC

www.klotzetechnik.de



NOT:

A series of horizontal dotted lines for writing, with a large, faint, grey silhouette of a horse's head and neck in the center, serving as a watermark or background graphic.





TRUCK **SPARE PARTS**



KLÖTZE
TECHNIC

www.klotzetechnik.de

Gesuchte Europäische
Qualität

Klötze Technic ist ein in Deutschland ansässiger Hersteller und Lieferant von LKW-, Anhänger- und Bus-Ersatzteilen.



#KLOTZETECHNIC